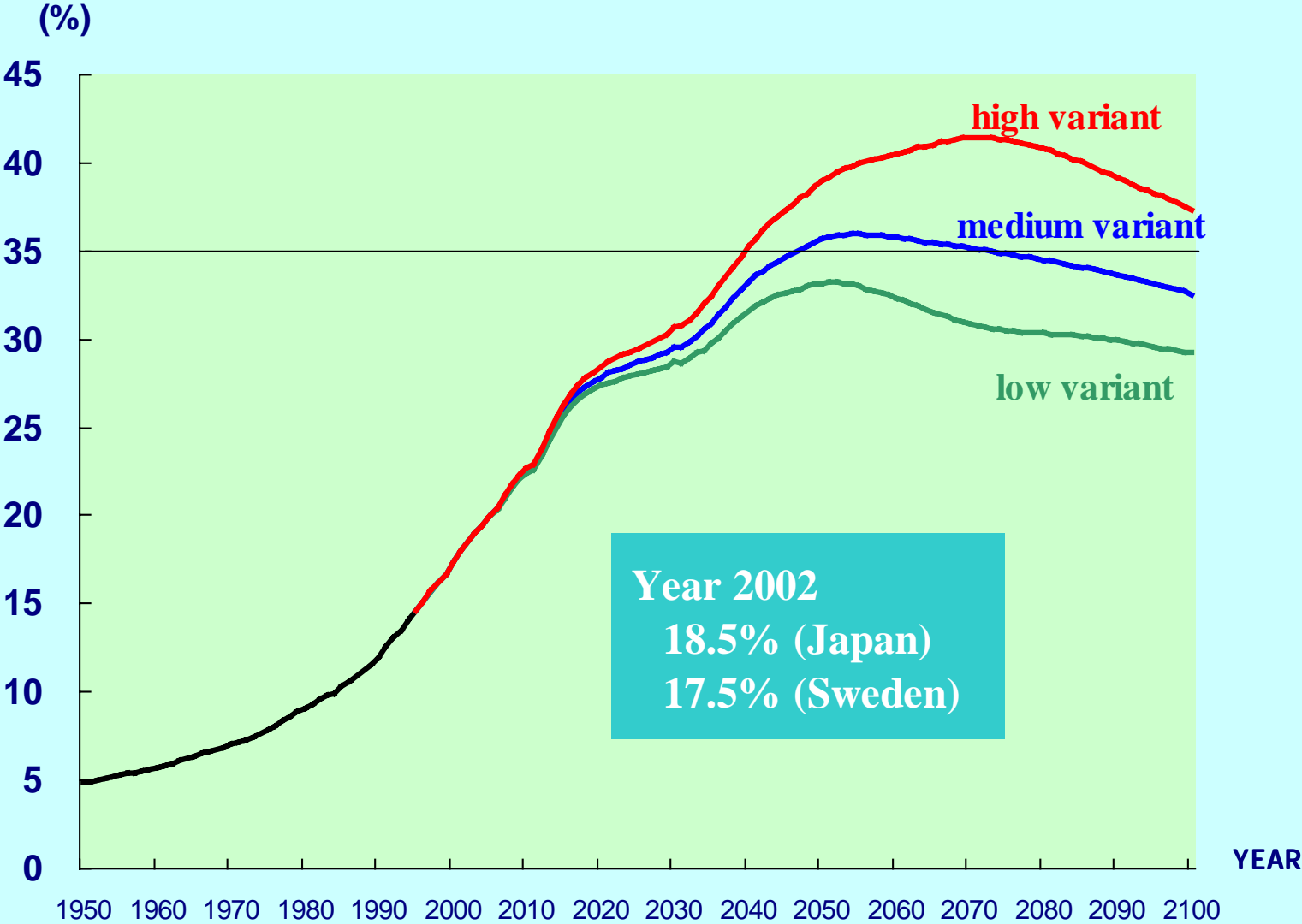
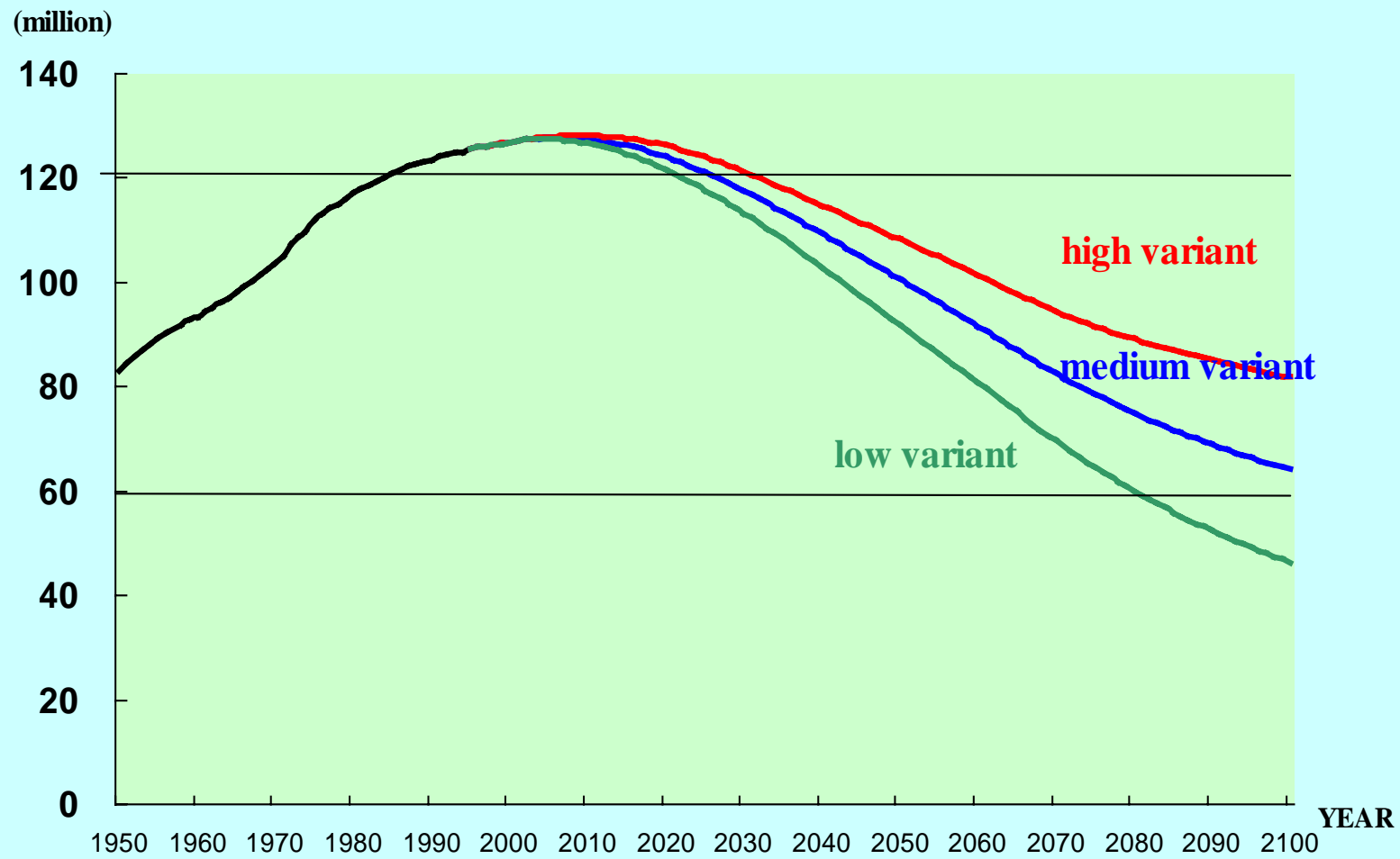


# Figure 1 Proportion of the Elderly(+65) in Japan



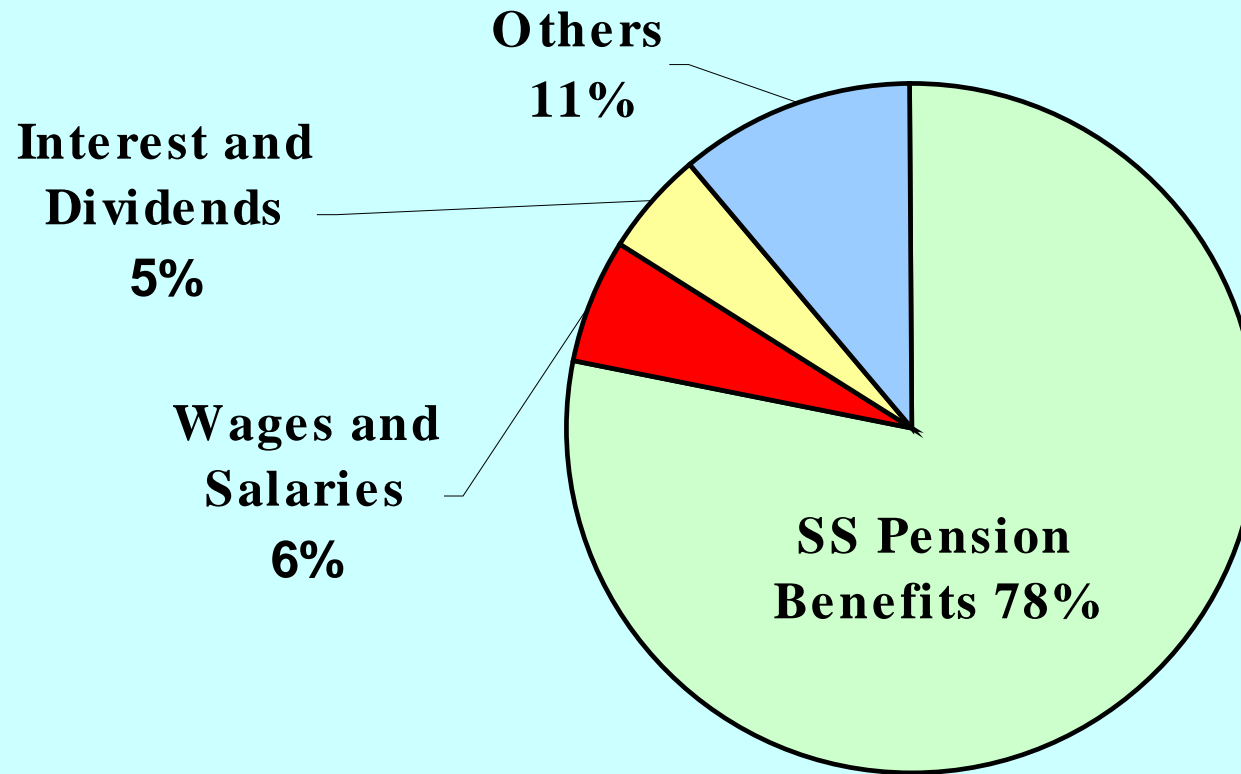
Source: National Institute of Population and Social Security Research (2002), Population Projections for Japan: 2001-2100

**Figure 2 Actual and Projected Populations of Japan**



Source: National Institute of Population and Social Security Research (2002), *Population Projections for Japan: 2001-2100*

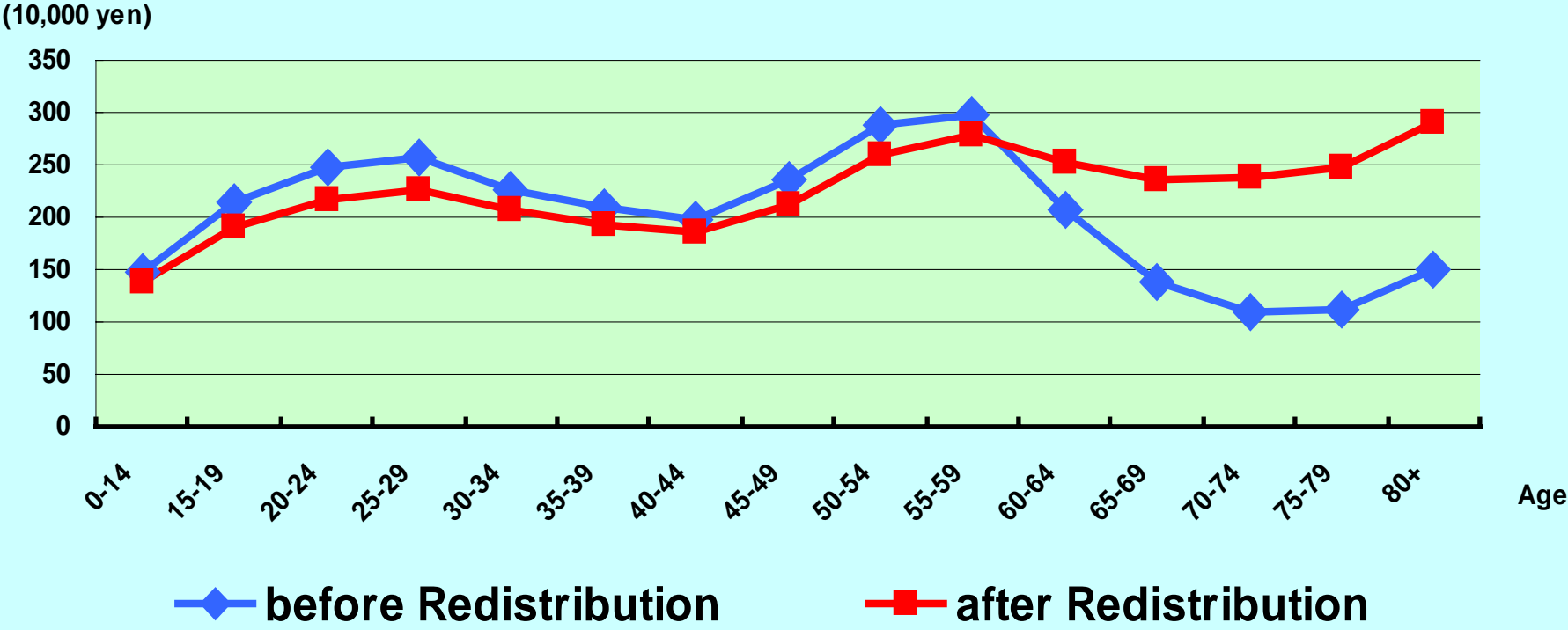
**Figure 3 SS pension benefits are the major source of retirement income**



**Median income:  
3.38 million yen**

Source: *The 1989 NSFIE* (elderly couples: median income group)

# Figure 4 Per-capita Income by Age in Japan



Source: Ministry of Health and Welfare, *The 1996 Income Redistribution Survey*

**Figure 5 Main Income Sources of Japan's  
Central Government  
(Fiscal Year 1999)**

