

IER Spotlights

Hitotsubashi
University Institute
of Economic Research
一橋大学経済研究所

Spring
2019
VOL.002



📖 The Institute Earns the Highest Grade of "S" in Interim Evaluation of Joint Usage and Research Center Programs.

／ 共同利用・共同拠点事業中間評価が最上位の「S」評価取得

📖 "Progress for What (Whom)"— Towards Critical Theory and Public Reasoning ／ 何の(誰の)ための進歩か—— 批判理論と公共的討議に向けて

📖 Jean Tirole is Back!! ／ ジャン・ティロール教授の一橋再訪

📖 Michael Waldman Special Lecture and Workshop on Internal Labor Markets ／ マイケル・ワルドマン教授による内部労働市場に関する特別講義とワークショップ

📖 Professor Emeritus Yukihiro Kiyokawa is Awarded the Order of the Sacred Treasure, Gold Rays with Neck Ribbon ／ 清川雪彦名誉教授が瑞宝中綬章を受章

📖 Professor Emeritus Osamu Saito Elected an International Honorary Member ／ 斎藤修名誉教授が米国芸術科学アカデミーの外国人名誉会員に選ばれました

This issue of "IER Spotlights" is the second since its publication began in spring 2018. Its purpose is to provide readers with an introduction to selected activities in order to convey a sense of what takes place every day at the Institute of Economic Research, Hitotsubashi University. The first issue appears to have been well received, and we are confident that this second issue too contains a full breadth of content. We hope you will enjoy reading it.

This issue includes a large number of Director's Choices. First, as a top news story it reports that the Institute has earned the top grade of "S" in the interim evaluation of national universities' Joint Usage and Research Center Programs by the Ministry of Education, Culture, Sports, Science and Technology (conducted during fiscal 2018). Joint Usage and Research Center Programs are centers for advancing joint research through joint usage by both internal and external researchers of resources such as research equipment, data, and materials, across the boundaries separating individual universities.

We were the only facility to earn a grade of S in the humani-



Director Takashi Oshio
所長 小塩隆士教授

Director's Choice!

IER Spotlights Updated

研究所広報誌, 第2号が完成

ties and social sciences (among 11 facilities in the field). We feel greatly honored to have the results of our research activities evaluated so highly. At the same time, each and every member of Institute faculty and staff feels a strengthened resolve to make even stronger efforts to fulfill expectations for further enhancement of the Institute's functions.

The area on which the Institute is devoting the greatest effort is that of proactive exchange with researchers from overseas. In fiscal 2018 as well, we welcomed numerous famous visiting researchers. In addition to cosponsoring with the International Panel on Social Progress (IPSP) a policy forum that welcomed Prof. Marc Fleurbaey (of Princeton University), Prof. Purnamita Dasgupta (of the Institute of Economic Growth [India]), and others as panelists, we also held public symposia and workshops for researchers that welcomed a long list of prominent researchers including the world-famous thinker and philosopher of science Prof. Jean-Pierre Dupuy (of the École Polytechnique and Stanford University), industrial organizational theorist and game theorist Prof. Jean Marcel Tirole (of Université Toulouse I), a winner of the Nobel Prize in Economics, and the global authority in labor economics Prof. Michael Waldmann (of Cornell University).

We would be remiss if we did not report that the achievements of senior researchers who have made substantial contributions to the Institute's activities through now have earned strong evaluations from society at large. The news that Professor Emeritus Yukihiko Kiyokawa was awarded *the Order of the Sacred Treasure, Gold Rays with Neck Ribbon* and Professor Emeritus Osamu Saito was elected to the American Academy of Arts and Sciences in fiscal 2018 is a source of considerable pride to all of us currently at the Institute as well.

Of course, those of us at the Institute today are responsible for building further on the achievements of our predecessors such as these. In fiscal 2018, Prof. Ryo Kambayashi was honored with both the Economist Prize and the Merit Award for Labor-related Publications, for a book he authored. In the future as well, all of us at the Institute intend to advance our research activities to the extent that they result in so much good news that we could not fit all of it in this Director's Choice column.

この"IER Spotlights"は、2018年春に創刊され、本号が第2号になります。一橋大学経済研究所は、日頃どのような活動を行っているのか。皆さんに特に知っていただきたいことを、選りすぐってご紹介することを目的としています。創刊号は、おかげ様で好意的に受け入れていただいたようです。第2号も、充実した内容になっていると自負しています。是非ご一読ください。

今回のDirector's choice (所長の一押し)は盛りだくさんです。まず、トップ・ニュースとして、文部科学省による国立大学の共同利用・共同研究拠点の中間評価(2018年度実施)の結果、本所が最上位の「S」評価を得たことをご報告します。共同利用・共同研究拠点とは、個々の大学の枠を超えて、研究設備やデータ・資料などを内外の研究者が共同で利用し、共同研究を進める拠点のことです。

人文・社会科学系で「S」評価を得た拠点は、本所だけでした(全分野では11拠点)。私たちの研究活動の成果がこうして高く評価されたことは、たいへん名誉なことだと思っております。同時に、拠点としてのさらなる機能強化への期待にそぐわないよう一層努力する必要がありますと、所員一同、身の引き締まる思いをしております。

そうした本所が最も力を入れている活動の一つが、海外の研究者との積極的な交流です。2018年度も、著名な研究者を多数招聘しました。マーク・フローベ教授(プリンストン大学)やブル

ナミタ・ダスグプタ教授(経済成長研究所(インド)教授)らをパネラーとして招いた政策フォーラムを「社会的進歩のための国際パネル」(IPSP)との共催で開催したほか、世界的に著名な思想家・科学哲学者ジャン=ピエール・デュピュイ教授(エコール・ポリテクニク、スタンフォード大学)、ノーベル経済学賞受賞者で産業組織論・ゲーム論のジャン・ティロー教授(トゥールーズ第1大学)、労働経済学の世界的権威であるマイケル・ワルドマン教授(コーネル大学)など、錚々たる研究者を招いて、一般向けのシンポジウムや研究者向けのワークショップを開催しました。

本所の活動にこれまで多大な貢献をしてきた先輩研究者の業績が、社会的に高く評価されていることもご報告しなければなりません。2018年度には、清川雪彦名誉教授の瑞宝中綬章受章、斎藤修名誉教授の米国アカデミー選出という、私たち現役スタッフにとってもたいへん誇りになるニュースがありました。

もちろん、こうした先輩研究者が築き上げてきた業績をさらに発展させていくことが、私たち現役スタッフに求められた責務です。2018年度は、労働経済学の神林龍教授がその著書により、エコノミスト賞と労働関係図書優秀賞をダブル受賞するという、名誉ある成果が挙げられました。これからも、所員一同、このDirector's choiceで紹介しきれないほどのニュースを提供できるよう、研究業務に邁進する所存です。

The Institute Earns the Highest Grade of "S" in Interim Evaluation of Joint-Usage and Research Center Programs

共同利用・共同拠点事業中間評価が最上位の「S」評価取得

Since fiscal 2010, the Institute has served as a Center for Empirical Analysis on Japanese and Global Economy under the Ministry of Education, Culture, Sports, Science and Technology's Joint Usage and Research Center Program, helping to raise the level of research in Japan by making available for use by domestic and international researchers a wide range of statistics through initiatives including development and provision of microeconomic data from government statistics. In addition, by promoting joint research based on industry-government-academy partnerships and broad-ranging cooperation with international institutions using such data, it has contributed to the research community through means such as system-design and policy recommendations based on empirical analysis of economic issues affecting Japan as well as other countries, including developing countries and emerging markets.

While there are 105 Joint Usage and Research Center Programs across Japan, the 75 Centers located at national universities were subjected to interim evaluation by the Ministry of Education, Culture, Sports, Science and Technology in fiscal 2018. We are proud to report that as a result, the Institute was the sole Center among the eight Centers in the humanities and social sciences to receive the top grade of S. This evaluation

reflects a high evaluation based on considerations including the facts that the Institute is functioning as a Joint Usage and Research Center for advanced empirical analysis using Japanese economic data, prompting diverse international joint research, and that its research results have earned numerous academic awards and have been published in academic journals that have high impact factors.

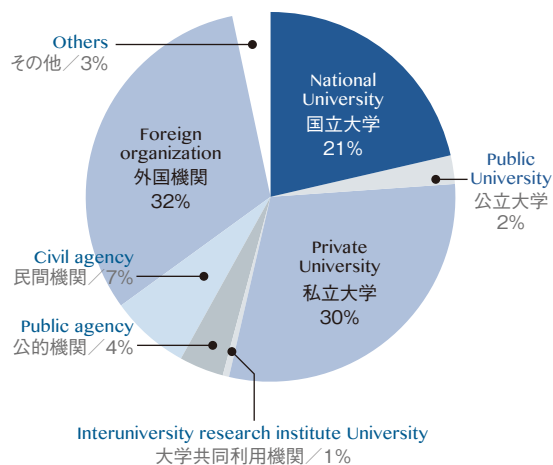
Issues we will face as we move ahead into the future will include the needs to stimulate international research exchange even further and to enhance cooperation with other research institutes in Japan, and we intend to make even stronger efforts as we aim to play an even more active role in the future while maintaining the level of this interim grade all the way to the final evaluation. While we are confident that this evaluation is based on reflection of our own research activities, at the same time there can be no doubt that we have been assisted greatly by the joint activities conducted with numerous researchers from outside the University and around the world who have taken an interest in the Institute's Joint Usage and Research Center Program and participated in its research, and by the research results that the Institute has accumulated over the past 70 years. We appreciate your continued understanding and support.

2010年度以降、本所は文部科学省の共同利用・共同研究拠点制度の下で、「日本および世界経済の高度実証分析」の拠点として機能しています。政府統計のマイクロデータの整備・提供をはじめとして、さまざまな統計を国内外の研究者に利用可能なものとして日本における研究水準の向上を図ってきました。またそれらを用いた産官学及び国際機関との幅広い連携に基づく共同研究の推進を通じ、開発途上国や新興市場等の諸外国や我が国の経済問題に関し、実証分析に基づく制度設計・政策提言を行う等、研究者コミュニティに貢献して参りました。

共同利用・共同研究拠点は全国で105拠点ありますが、そのうち国立大学に存在する75拠点が2018年度、文部科学省による中間評価を受けました。その結果、人文社会科学系に位置づけられる8拠点の中で、本所のみが最上位の「S」評価を受けたことをご報告致します。そこでは本所について、日本の経済データを用いた高度実証分析の共同利用・共同研究拠点として機能しているものと目され、また多数の国際共同研究が推進されていることや、成果について数々の学術賞の授賞があることやインパクトファクターの高い学術誌などで発表されていることなどに付き、高い評価を戴いた次第です。

将来に向け、国際研究交流の一層の活性化や、国内における他研究機関との連携の強化等が課題になっていると考えており、今次中間評価の水準を最終評価まで維持し、更に今後の活動の飛躍につなげるべく、より尽力して参りたいと存じます。今回受けました評価は、私ども自身の研究活動に基盤を置くものと自負しているところではありますが、同時に本所の拠点事業にご関心をお持ちになりご参加いただいている多数の学外・国外研究者の方々との共同作業や、またこれまでの70年間に亘る本所の研究成果の蓄積という大きな助力の賜物であることも疑い無く、より一層のご助力とご支援とを賜りたく存じます。何卒宜しくお願い申し上げます。

Affiliations of Principal and co-investigators in FY2017
共同研究者の受入状況(2017年度)



Databases

整備しているデータベース

Long-Term Economic Statistics (LTES) Database	日本長期経済統計データベース
Asian Historical Statistics (ASHSTAT) Database	アジア長期経済統計 基礎データ
Japan Industrial Productivity (JIP) Database	JIPデータベース(日本産業生産性データベース)
R-JIP Database	R-JIPデータベース(都道府県別産業生産性データベース)
Database on Large Shareholders and Corporate Officers	大株主・役員情報データベース
Japanese Study of Aging and Retirement (JSTAR)	くらしと健康の調査(JSTAR)

“Progress for What (Whom)” — Towards Critical Theory and Public Reasoning

「何の(誰の)ための進歩か」

—— 批判理論と公共的討議に向けて

The Research Center for Normative Economics functions as a hinge at Hitotsubashi University. A highlight of its activities this fiscal year was the implementation of critical theory in a Kantian sense. First, the seminars "What's Missing in Economics: Philosophical Perspectives on the Future of the Economy" and "Welfare Economics and the Welfare State: From the Perspective of the Hibakusha" were held, with Prof. Jean-Pierre Dupuy playing a core role. Each of these had a strong impact—the former in light of the fact that it was organized by younger researchers and the latter in that it promoted Hitotsubashi University's unique

studies of nuclear bombing victims to the World Social Science Forum (WSSF).

Next, consecutive seminars were held as part of the International Panel on Social Progress (IPSP). The theme of day one was "Reexamination of the Methodology of the Social Science," while that of day two was "Progress for What (Whom)," providing opportunities for public reasoning.

The powerful message communicated by these two programs was that Hitotsubashi University will not remain silent in this time of dramatic changes in areas such as Japan's pacifist constitution, securing the right to a minimum standard of living, and corporate governance.



規範経済学研究センターは一橋大学の蝶番を務めます。本年度の活動の目玉はカント的意味での「批判理論」を実践することでした。まずは、ジャン＝ピエール・デュピュイ教授をコアに、「経済学の忘れモノ—哲学から考える経済の未来—」と「厚生経済学と福祉国家—ヒバクシャの視点から—」を開催しました。前者は若者たちが立ち上がった点で、後者は一橋大学独自の原爆被爆者調査をWSSF (World Social Science Forum) にアピールした点で、強いインパクトをもちました。



つづいて、IPSP(International Panel on Social Progress)と連続セミナーを開催しました。1日目は「社会科学の方法論的再検討」をテーマとし、2日目は「何の(誰の)ための進歩か」をテーマとして公共的討議の場を創出しました。

「平和憲法・生存権保障・企業統治などをめぐって大きく揺れ動く現代、一橋大学が座して黙することは許されないであろう。」これが2つの企画の発した強いメッセージです。

Feature Article 3

Jean Tirole is Back!!

ジャン・ティロール教授の一橋再訪



On October 31, 2018, Prof. Jean Tirole, winner of the 2014 Nobel Prize in Economics, returned to Hitotsubashi University for the first time in five years. In addition to an informal discussion with the President of the University, he also delivered a lecture to the general student body and faculty, titled "Moral Reasoning, Markets, and Organiza-

tions." The lecture was attended by numerous students and faculty members and featured a lively questions-and-answers session. A long line of students sought to speak with Prof. Tirole after the seminar. Prof. Tirole also took part in highly informative discussions with faculty members.

2014年にノーベル経済学賞を受賞したジャン・ティロール教授が2018年10月31日に、5年ぶりに一橋大学を訪問されました。一橋大学では学長との懇談の他、一般学生・教員向けに「倫理的説明、市場、組織」というタイトルで講演をされました。当日は多くの学生・教員が参加し、活発な質疑応答が行われました。講演後にはティロール教授との対話を求める学生で長蛇の列ができました。また、教員との談話も有益でした。

Feature Article 4

Michael Waldman Special Lecture and Workshop on Internal Labor Markets

マイケル・ワルドマン教授による 内部労働市場に関する特別講義とワークショップ

Invited from Cornell University in the United States, Prof. Michael Waldman, the preeminent researcher on internal labor markets, gave a special one-day lecture at Hitotsubashi University's Sano Shoin Hall on October 31, 2018, followed by a workshop on November 2 at Hitotsubashi Hall. Internal labor market research is a research area that analyzes, from an economic perspective, promotions, evaluations, wage determination, task assignment, delegation of authority, incentives, and other important factors internal to the enterprise that have been treated as a "black box" by traditional economics. Both of these

events were attended by large numbers of researchers and graduate students, and during the workshop seven researchers presented their papers, on which Prof. Waldman commented. They featured lively discussion on topics such as future directions for internal labor market research.



内部労働市場研究の第一人者であるマイケル・ワルドマン教授を米国コーネル大学からお招きし、2018年10月31日に一橋大学佐野書院にて1日特別講義を、11月2日に一橋講堂にてワークショップを開催しました。内部労働市場研究は、伝統的な経済学がブラックボックスとして扱ってきた企業内部における昇進・査定・賃金決定・職務分担・権限委譲・インセンティブなどの重要事項を経済学的な観点から分析する研究分野です。両日とも多数の研究者・大学院生が出席、ワークショップでは7名の研究者が論文を報告して同教授からコメントをいただき、内部労働市場研究の今後の発展方向などについて活発な議論が行われました。

Feature Article 5

Professor Emeritus Yukihiro Kiyokawa is Awarded the Order of the Sacred Treasure, Gold Rays with Neck Ribbon

清川雪彦名誉教授が瑞宝中綬章を受章

Hitotsubashi University Professor Emeritus Yukihiro Kiyokawa was awarded the Order of the Sacred Treasure, Gold Rays with Neck Ribbon in the autumn 2018 conferment of decorations. The Order of the Sacred Treasure is a decoration presented to those who have made significant contributions over many years in public service or activities beneficial to the public. Prof. Kiyokawa contributed greatly to the progress of both the Insti-

tute and the University while working at the Institute from 1970 to 2006 and serving as its Director from 1996 to 1998. During this period, he recorded substantial achievements in research and education on development economics -particularly in the fields of Asian economies, technology transfers, and comparative economic history. All members of Institute staff join in congratulating Prof. Kiyokawa on this honor.

清川雪彦一橋大学名誉教授は、2018年秋の叙勲で「瑞宝中綬章」を受章されました。瑞宝章は、公務または公共的な業務に長年にわたり従事して功労を積み重ね、成績を挙げた者を表彰するものです。清川先生は、1970年から2006年まで本所に勤められ、1996年から98年には所長として研究所および本学の発展に尽力されました。この間、開発経済学の研究と教育、とりわけ、アジア経済論、技術移転論、比較経済史の分野で顕著な業績を残されました。清川先生のこのたびの栄誉を、研究所スタッフ一同、心からお祝いいたします。

Feature Article 6

Professor Emeritus Osamu Saito Elected an International Honorary Member of the American Academy of Arts and Sciences

斎藤修名誉教授が米国芸術科学アカデミーの 外国人名誉会員に選ばれました

Professor Emeritus Osamu Saito has been elected an International Honorary Member of the American Academy of Arts and Sciences, one of the longest-established academic societies in the United States. While working at the Institute from 1982 to 2009, Prof. Saito's responsibilities included serving as site

leader for the 21st Century COE Program and as Director of the University Library. A specialist in comparative economics and demographic history, he was elected to the Academy in recognition of his contributions to the field of history. He continues vigorous research activities today.

斎藤修一橋大学名誉教授が、米国で最も歴史のある学会のひとつである米国芸術科学アカデミー (American Academy of Arts and Sciences) の外国人名誉会員に選ばれました。斎藤先生は1982年から2009年まで本所に勤められ、21世紀COEプログラムの拠点リーダーや、大学附属図書館長などを歴任されました。ご専門は比較経済史、歴史人口学で、今回は歴史分野での活躍が評価され会員に選ばれました。現在も精力的に研究を続けていらっしゃいます。

International Publications from IER

Selected Journal Articles and Book Chapters in 2017-2018

- Ralandison, T., **Y. Arimoto**, H. Kono, T. Sakurai and K. Akahashi (2018) "Rice Flows Across Regions in Madagascar," *African Journal of Agricultural and Resource Economics*, 13: 78-105.
- Fukao, K.**, T. Inui and H.U. Kwon (2017) "The Economic Impact of Korean Reunification on Major Trade Partners: An Empirical Analysis Based on the World Input-Output Tables," *Emerging Markets Finance and Trade*, 53: 2476-2504.
- Gotoh, R.** (2018) "What Political Liberalism and the Welfare State Left Behind: Chance and Gratitude," In H.U. Otto, M. Walker and H. Ziegler eds., *Capability Promoting Policies : Enhancing Individual and Social Development*, Policy Press: 23-41.
- Iwasaki, I.** and A. Uegaki (2017) "Central Bank Independence and Inflation in Transition Economies: A Comparative Meta-Analysis with Developed and Developing Economies," *Eastern European Economics*, 55: 197-235.
- Iwasaki, I.** and S. Mizobata (2018) "Post-Privatization Ownership and Firm Performance: A Large Meta-Analysis of the Transition Literature," (Selected as Editor's Choice Article) *Annals of Public and Cooperative Economics*, 89: 263-322.
- Miyazaki, T., **Y. Kitamura** and T. Ohno (2018) "Income Tax Reforms and Redistribution by Age Group: Evidence From Japan," *Japanese Economic Review* 70: 105-122.
- Litvinenko, T. and **K. Kumo** (2017) "Post-Soviet Period Changes in Resource Utilization and Their Impact on Population Dynamics in Chukotka Autonomous Okrug," *Geography, Environment, Sustainability*, 10: 66-86.
- Kurosaki, T.** (2017) "Household-Level Recovery after Floods in a Tribal and Conflict-Ridden Society," *World Development*, 94: 51-63.
- Kurosaki, T.** (2018) "Informality, Micro and Small Enterprises, and the 2016 Demonetisation Policy in India," *Asian Economic Policy Review*, 14: 97-118.
- Ma, X.** (2017) "Labour Market Segmentation by Ownership Types and Gender Wage Gap in Urban China: Evidence from CHIP2013," *Economic and Political Studies*, 5: 305-325.
- Ma, X.** (2018) "Labor Market Segmentation by Industry Sectors and Wage Gaps between Migrants and Local Urban Residents in Urban China," *China Economic Review*, 47: 96-115.
- Morita, H.** and Ghosh, A (2017) "Knowledge Transfer and Partial Equity Ownership," *RAND Journal of Economics*, 48: 1044-1067.
- Ghosh, A., **H. Morita** and X. Nguyen (2018) "Technology Spillovers, Intellectual Property Rights, and Export-Platform FDI," *Journal of Economic Behavior & Organization*, 151: 171-190.
- Okabe, T.** and D. Nogiwa (2018) "Estimation of Unobserved Dynamics of Individual Partisanship: A Bayesian Approach," *Behaviormetrika*, 45: 25-55.
- Usui, E.**, S. Shimizunani and **T. Oshio** (2017) "Health Capacity to Work at Older Ages: Evidence from Japan," In: D.A. Wise ed., *NBER Book Social Security Programs and Retirement Around the World: The Capacity to Work at Older Ages*, University of Chicago Press, 219-241.
- Oshio, T.**, A. Inoue and A. Tsutsumi (2018) "Associations among Job Demands and Resources, Work Engagement, and Psychological Distress: Fixed-effects Model Analysis in Japan," *Journal of Occupational Health*, 60: 254-262.
- Tajika, T.** (2018) "Signature Requirement for Initiatives," *Journal of Theoretical Politics*, 30: 451-476.
- Tajika, T.** and T. Kazumura (2018) "Non-manipulability of Uniform Price Auctions with a Large Number of Objects," *International Journal of Game Theory*, 1-17.
- Dell, M., B. Feigenberg and **K. Teshima** (2018) "The Violent Consequences of Trade-induced Worker Displacement in Mexico," *American Economic Review: Insights*.
- Gutiérrez, E. and **K. Teshima** (2018) "Abatement Expenditures, Technology Choice, and Environmental Performance: Evidence from Firm Responses to Import Competition in Mexico," *Journal of Development Economics*, 133: 264-274.
- Hazama, M. and **I. Uesugi** (2017) "Measuring the Systemic Risk in Interfirm Transaction Networks," *Journal of Economic Behavior and Organization*, 137: 259-281.
- Kobayashi, M. and **E. Usui** (2017) "Breastfeeding Practices and Parental Employment in Japan," *Review of Economics of the Household*, 15: 579-596.

Note: IER Staffs in Blue Bold. 注:青字太字が研究所教員

Selected Books and Edited Books from IER



Standard Workers, Non-Standard Workers, Keio University Press, 2017 (in Japanese). by R. Kambayashi

This book describes observations, from multiple perspectives, on labor markets in contemporary Japan, based on the keyword of labor-management autonomy. Pointing out matters such as the fact that the core of long-term employment practices was maintained throughout the "lost two decades" centered on the 1990s and that the number of regular employees in Japan in fact has not decreased—rather, the increase in the number of non-regular employees corresponds to a decrease in self-employment—this work won the 58th Economist Prize (from Mainichi Shimbun) and the 41st Merit Award for Labor-related Publications (from the Japan Institute for Labor Policy and Training and Yomiuri Shimbun).

労使自治をキーワードに、現代日本の労働市場を多角的に観察した書籍です。1990年代の失われた二十年を通じて長期雇用慣行のコアは守られていたこと、正社員は減少しておらず、非正社員の増加は自営業の減少と対応していたことなどを指摘し、第58回エコノミスト賞(毎日新聞社)、第41回労働関係図書優秀賞(日本労働政策研究・研修機構、読売新聞社)を受賞しました。



Economic Transition and Labor Market Reform in China, Palgrave Macmillan 2018. by X. Ma

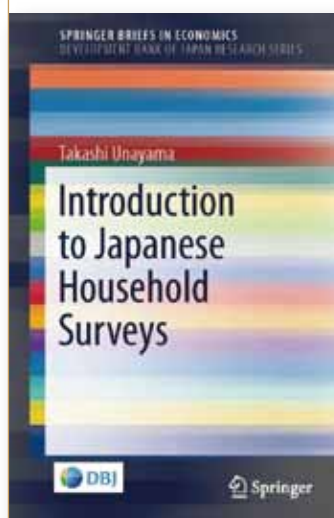
To investigate the structural changes in Chinese labor market during the economic system transition period, utilizing a large-scale, a set of Chinese micro-survey datasets, this book employs empirical studies which focus on the influences of labor market segmentation by system factors such as the public sectors and private-sector, and Hukou (urban or rural registration system) on inequality, and the impact of policy (such as the minimum wage) reforms on individual, household and enterprise behaviours.

本書は、体制移行期の中国における労働市場の構造変化を解明するため、大規模で多様な中国のマイクロデータを活用し、国有企業部門と民間企業部門、都市戸籍と農村戸籍などの制度要因による労働市場の分断化が格差に与える影響や、最低賃金制度などの政策改革が個人、家計および企業の行動に及ぼす影響を実証的に分析したものです。

Introduction to Japanese Household Surveys, Springer Singapore 2018. by T. Unayama

The activities of households play an important part in the Japanese economy. Household consumption is an important decisive factor in the economic cycle, and inter- and intra-generational allocation of income is essential to analysis of the sustainability of public pension plans and of inequality. This book lists various household surveys in Japan and explains how to read and use them. It's an essential how-to guide for analyzing Japan's economy.

日本経済において家計の行動が重要になっています。家計消費は景気循環の重要な決定要因ですし、世代間・世代内の所得分配は公的年金制度の維持可能性や格差の分析に不可欠です。本書では、日本のさまざまな世帯調査をリストアップし、その見方・使い方を解説しています。日本経済分析のための必須のマニュアルです。



IER Publications

①
Product Architecture and Human Resource Management: Comparing Japan, China, and Korea, Iwanami Shoten, 2018, Economic Research Series (in Japanese), by T. Tsuru

都留 康
『製品アーキテクチャと人材マネジメントー中国・韓国との比較からみた日本』
一橋大学経済研究所叢書
岩波書店

Why do Japanese firms find it so difficult to compete globally with Chinese and Korean firms? This book carries out detailed international comparisons of factors such as product development practices at firms in these three countries, the human resource management of engineers, and the impact of communication patterns among engineers on productivity.

It also offers recommendations on what Japanese firms should do to revitalize themselves. This book won the Japan Society for Evolutionary Economics Prize.

中国・韓国企業とのグローバル競争の中で、日本企業がこれほど苦戦しているのはいったいなぜか。本書では、3か国企業の製品開発の実際、エンジニアの人材マネジメントとエンジニア個人の行動やコミュニケーションのあり方が生産性に及ぼす影響などを詳細に国際比較しました。そして、日本企業再生のために何がなされるべきかの提言を行いました。本書に対しては、「進化経済学会賞」が授与されました。



②
Living and Health, Iwanami Shoten, 2018, Economic Research Series (in Japanese), by T. Oshio

小塩 隆士
『くらしと健康ー「健康の社会的決定要因」の計量分析』
一橋大学経済研究所叢書
岩波書店

We all want to live healthy lives. But at the same time, we all face the risks of worsening physical health and of mental health issues. This book analyzes empirically, using data from a large-scale social survey, the impact that various factors affecting our lives, such as lifestyle, work-style, and long-term care for parents, has on our health.

私たちは、誰もが健康な生活を送りたいと思っています。しかし、身体の調子が悪くなったり、精神面の問題を抱えたりするリスクは誰にもあります。本書では、くらし向きや働き方、親の介護など、私たちのくらしを取り巻くさまざまな要因が健康にどのように影響するのか、大規模な社会調査のデータを用いて実証的に分析しています。



③
Economic Review Iwanami Shoten

『経済研究』岩波書店

Vol. 69, no. 4 features the results of the large-scale research project Service Sector Productivity in Japan: Determinants and Policies. An essay by lead researcher Fukao et al, "Productivity Dynamics Among Japanese Small and Medium-Sized Enterprises," analyzes the mechanisms of productivity increases at Japanese SMEs. "Consumer Preferences of the Quality and Price of Personal Services," by Morikawa, and "Who Provides High Quality Services?" by Ishikawa et al, analyze productivity in Japan's service industries.

69巻4号は、大型科研費プロジェクト「サービス産業の生産性：決定要因と向上策」の成果を掲載。研究代表者である深尾らの論文「中小企業における生産性動学」は、我が国の中小企業の生産性上昇メカニズムを分析しています。森川「サービスの質・価格と消費者の選好」、石川他「どのような企業のサービスの質が高いのか?」は、日本のサービス産業の生産性に関する分析です。

IER Large Projects

Grant-in-Aid for Scientific Research (S)

科学研究費補助金 基盤研究(S)

Title **Service Sector Productivity in Japan: Determinants and Policies (SSPJ)**
研究課題 サービス産業の生産性: 決定要因と向上策

Principal Investigator **Kyoji Fukao** **Total Thou JPY in 2018** **18,600**
研究代表者 深尾京司 交付総額(千円)

Improving productivity in service industries is one of the most important requirements for freeing Japan from economic stagnation. However, for a segment within service industries that accounts for about 40% of GDP, real production and productivity are not measured accurately at either the industrial or the corporate level, due to limitations in areas such as domestic econometric statistics and price statistics. With the participation in the research project of researchers from the Economic and Social Research Institute (ESRI) of the Cabinet Office of the Government of Japan as well as partners including the OECD and the European Commission, this study will utilize new measurement results to derive the decisive factors affecting productivity. Stressing factors such as utilization of information and telecommunications technology and investment in intangible assets; work-style reforms, accumulation and concentration of human capital, and local economies; and the weeding-out functions of the market and allocation of resources among enterprises, it will recommend policies to improve productivity in service industries as well as improvements to government statistics related to service industries and real production and productivity.

サービス産業の生産性向上は、日本が経済停滞から脱するための最も重要な要件です。しかしながら、サービス産業のうちGDPの約4割を占める部門では、国民経済計算統計や物価統計等の制約のため、産業レベルでも企業レベルでも実質生産や生産性を正確に計測されていません。本研究では、内閣府経済社会総合研究所(ESRI)の研究者やOECD・欧州委員会等の研究プロジェクトと協力し、新しい計測結果を用いて生産性の決定要因を求めます。情報通信技術の活用や無形資産投資、労働者の働き方、人的資本の蓄積、集積と地域経済、市場の淘汰機能と企業間の資源配分等の要因を重視し、サービス産業の生産性向上策、サービス産業の実質生産・生産性に関する政府統計の改善についても提言します。

Fund for the Promotion of Joint International Research, Home-Returning Researcher Development Research

国際共同研究加速基金 帰国発展研究

Title **New Perspectives on Industrial Organization Economics: Incorporating Human Aspect of the Firm**
研究課題 新たな視点からの産業組織分析: 「ヒト」に光をあてる

Principal Investigator **Hodaka Morita** **Total Thou JPY in 2018** **15,400**
研究代表者 森田穂高 交付総額(千円)

This project explores new perspectives on the "people" aspect of firms that compete against each other in the product market, and it also incorporates analysis based on factors such as alliances, partial consolidation, and transfer of technologies among firms. Furthermore, this project tests behavioral-economics hypotheses based on analysis and experimentation in contract theory and the boundaries of firms, and it also studies the relations between corporate management and management theory on the one hand and human-resources management on the other. Research analyzing the aspect of "people" within the firm has advanced through analysis of organizational economics and internal labor markets, successfully bringing up for discussion matters such as promotion, assessment, wage determination, task allocation, and human capital acquisition within firms. Elaborating on these previous research outcomes, this project will advance analysis from a more comprehensive point of view by combining such research progress with an approach grounded in industrial organizational theory.

企業間競争に関して、ヒト・モノ・カネの「ヒト」の側面に焦点をあてた新たな視点に加え、企業の提携・部分的結合・技術移転なども踏まえた分析を行っています。さらに、企業に関する契約理論分析および実験に基づく行動経済学的仮説の検証を行うとともに、企業経営・経営戦略と人材マネジメントとの関連にも注目します。企業内部の「ヒト」の側面を分析する研究は、組織の経済学・内部労働市場分析として進展し、昇進・査定・賃金決定・職務分担・企業内訓練などを柱上に載せることに成功しています。このような研究の進展に対してこのプロジェクトは、産業組織論のアプローチを融合させ、より総合的な観点からの分析を展開します。

Topic-Setting Program to Advance Cutting-Edge Humanities and Social Sciences Research (Constructing Data Infrastructure for the Humanities and Social Sciences)

国際共同研究加速基金 帰国発展研究

Title **Project Under Contract to Develop and Enhance an Infrastructure for Sharing of Data at Institutions**
研究課題 拠点機関におけるデータ共有基盤の構築・強化委託業務

Principal Investigator **Kiyomi Shirakawa** **Total Thou JPY in 2018** **25,000**
研究代表者 白川清美 交付総額(千円)

For a five-year period beginning in October 2018, the Institute of Economic Research, Hitotsubashi University is carrying out a project related to government statistics, as a contracted project under the Japan Society for the Promotion of Science program Constructing Data Infrastructure for the Humanities and Social Sciences. Through achievements including development of a database of government statistical data covering the long term, development of metadata such as information on survey questionnaires, and organization of aggregated data from government statistical questionnaires and related processing technologies (e.g., tailor-made aggregation, historical statistics, industrial structure databases, and databases for international comparison), as well as translation of these data to English and publishing them domestically and internationally while also improving the usability of individual data, this project will develop a comprehensive system to promote the use and utilization by the domestic and international research communities of government statistical data and other aggregated and processed data.

一橋大学経済研究所では、日本学術振興会の「人文学・社会科学データインフラストラクチャー構築プログラム」の委託業務として、2018年10月からの5か年間、政府統計に関するプロジェクトを実施します。このプロジェクトでは、長期間をカバーする政府統計データのデータベース化、調査票情報等メタデータの整備、政府統計個票の集計データや加工統計(オーダーメイド集計、歴史統計、産業構造データベース及び国際比較データベース等)の整理、及びこれらデータの英語化や国内外への発信、個票データの活用可能性の向上、等を通じて、国内外研究者コミュニティによる政府統計データやその集計・加工データの利活用を促進する総合的なシステムを構築します。

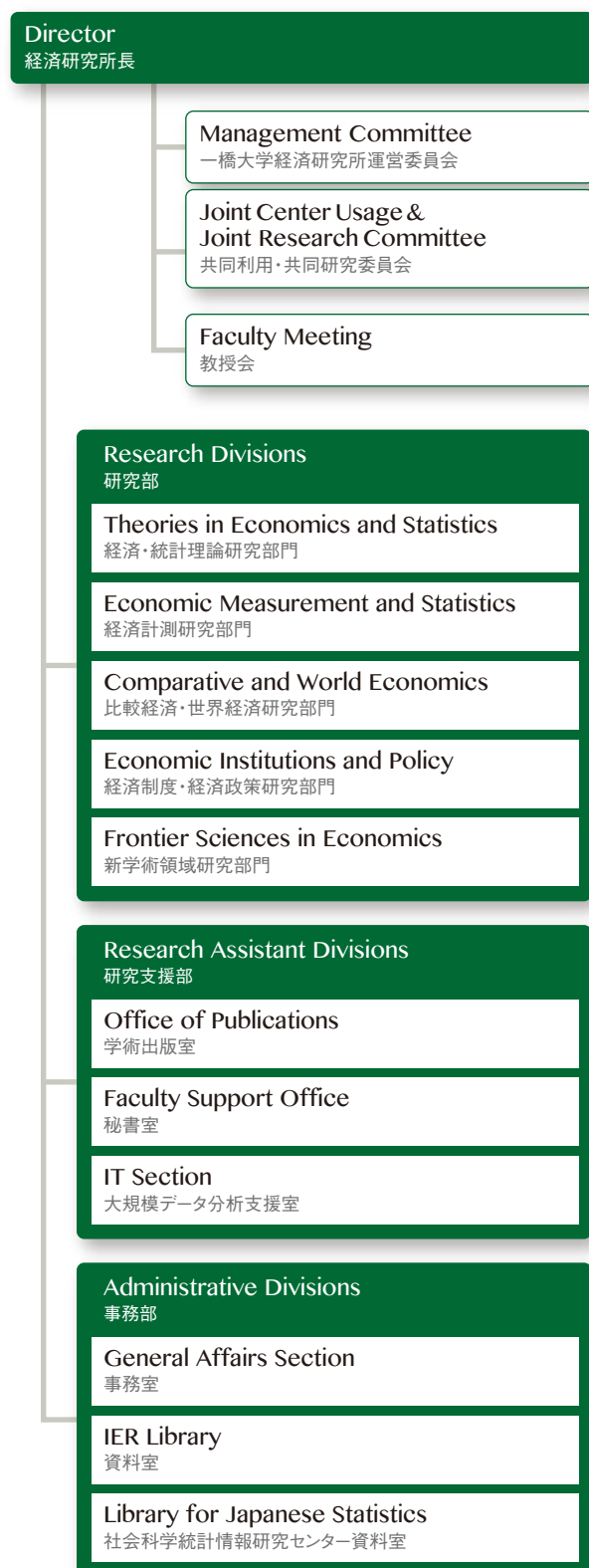
Organization

IER was founded in 1940 and has been active for more than 70 years as a leading economics institute in Japan. The institute now consists of five research divisions and six affiliated facilities and centers, and it pursues its mission to promote empirical analysis of the Japanese and World economies.

一橋大学経済研究所は、1940年に創設されて以来70年以上の歴史を誇る研究機関です。

現在は、5大研究部門と6附属施設・センターから成る組織体制を以て、日本及び世界の経済の総合研究、

独創的な世界最先端研究の推進、内外における研究者コミュニティの共同研究拠点・ハブの形成という3大ミッションを追求しています。



● Research Assistant Divisions

Office of Publications 学術出版室

The Office of Publications is responsible for editing the quarterly journal *Economic Review*, published by the Institute of Economic Research; managing periodic research meetings to report on papers published in *Economic Review*; announcing planned research meetings on the web-site; and posting to the discussion paper series.

掲載論文の報告のための定例研究会の運営、研究会開催予定のwebサイトへの掲載、研究所発行のディスカッション・ペーパーのwebサイトへの掲載を担当しています。

Faculty Support Office 秘書室

The responsibilities of the Faculty Support Office include serving as a liaison for researchers visiting the Institute of Economic Research from across Japan and around the world; managing research meetings and international conferences; and communicating information about the Institute's activities. One of its publicity activities is publication of the bulletin *Spotlights!*

経済研究所に訪れる国内外の研究者の窓口としての機能や、研究会や国際会議の運営、経済研究所の活動の情報発信業務などを担当しています。広報誌*Spotlights!*は、広報業務の一環です。

Large-Scale Data Archiving and Processing Section 大規模データ分析支援室

The Large-Scale Data Archiving and Processing Section is responsible for development and administration of networking environments at the Institute of Economic Research, information security measures, and other Institute activities in the IT field. It also supports research activities through means such as entry and maintenance of large-scale data used in research and providing assistance in data analysis.

経済研究所内のネットワーク環境の構築・管理や、情報セキュリティ対策など、研究所のIT分野を担当しています。また、研究で使用する大規模データの入力整備、分析補助など研究活動を支援しています。

● Affiliated Facilities and Centers

Research Centre for Information and Statistics of Social Science
社会科学統計情報研究センター

Center for Economic Institutions
経済制度研究センター

Center for Intergenerational Studies
世代間問題研究機構

Research Center for Economic and Social Risks
経済社会リスク研究機構

Russian Research Center
ロシア研究センター

Research Center for Normative Economics
規範経済学研究センター

I E R i n F i g u r e s

People in FY2017 スタッフ数 2017年度

Professor 教授	Associate Professor 准教授	Assistant Professor 講師	Research Associate/ Assistant 助教・助手	Other Research Staff その他研究スタッフ	Total 計
19	10	4	5	40	78

Administrator 事務職員	Librarian 司書	Other Admin Staff その他事務スタッフ	Total 計
5	9	40	132

Visiting Scholars 所外研究者受け入れ人数

FY 年度	Number of people
2015	67
2016	67
2017	71

Research Results 研究成果数

FY 年度	Books 書籍		Book Chapters and Journal Articles 論文	
	Foreign Languages 欧文	Japanese 和文	Foreign Languages 欧文	Japanese 和文
2015	2	9	73	47
2016	4	6	73	39
2017	4	14	61	42

*including forthcoming.

Budget in FY 2017 経済研究所予算 2017年度

Items	Amount (Thou,千円)
IER Budget and Indirect Costs of the Research Grants 自己収入	132,265
University Grants 運営費交付金	39,013
Research Grants and Donations 外部資金	153,900
Total 総計	325,178

Publications 研究所発行出版物 2017年度

Economic Research Series 経済研究叢書		Economic Review 経済研究	DP Series: 11 prjcs ディスカッション・ペーパー
In English	In Japanese		
1 vol.	1 vol.	4 vols.	75 papers

IER Library's Collections 経済研究所蔵書冊数

2017		Number of Books 蔵書冊数	Number of Journals 所蔵雑誌数
Library 資料室	Japanese 和文	154,763	3,451
	Foreign Languages 欧文	259,238	2,562
RCISS Library 社会科学統計情報研究センター		202,109	1,335

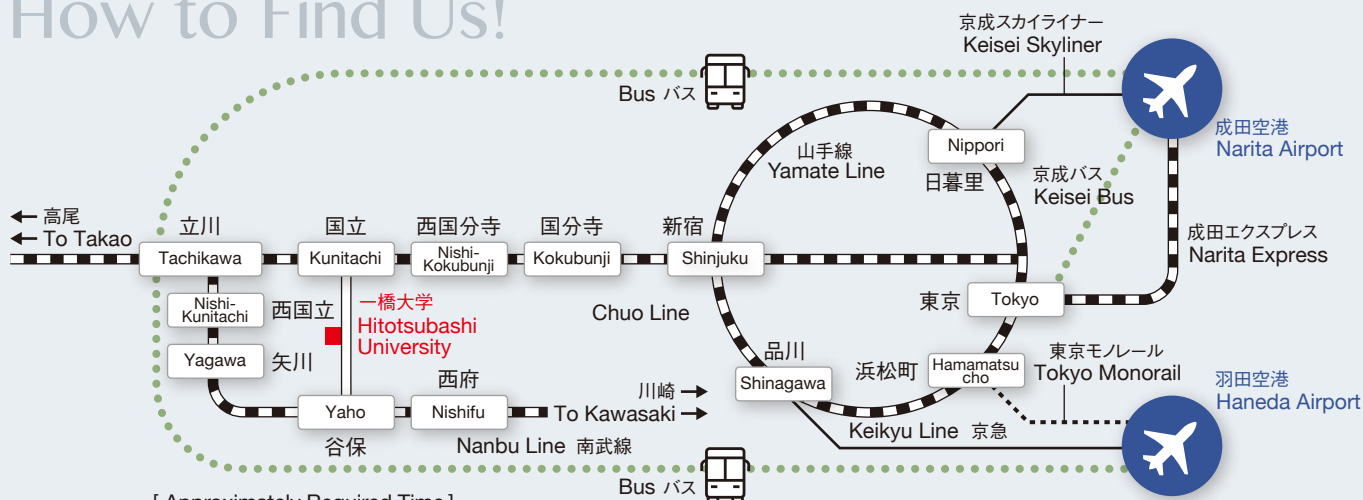
Joint Usage and Research Center Programs 共同利用・共同研究拠点実績

FY	2015	2016	2017
No. of Projects プロジェクト数	13	21	22
No. of Researchers Involved 参加研究者数	72	108	132

Research Grants in FY 2017 研究助成受け入れ実績 2017年度

Grant-in-Aid for Scientific Research (S) 基盤研究 (S)	2	Fund for the Promotion of Joint International Research (Fostering Joint International Research) 国際共同研究加速基金 (国際共同研究強化)	2
Grant-in-Aid for Scientific Research (A) 基盤研究 (A)	7	Health Labor Sciences Research Grant 厚生労働科学研究費補助金	1
Grant-in-Aid for Scientific Research (B) 基盤研究 (B)	5	Joint Research Projects/ Sponsored Research Projects 共同研究費・受託研究費・受託事業費	1
Grant-in-Aid for Scientific Research (C) 基盤研究 (C)	5	Donations 寄附金 (新規受け入れ分のみ)	4
Grant-in-Aid for Young Scientists (B) 若手研究 (B)	3		
Grant-in-Aid for Research Activity Start-up 研究活動スタート支援	1		
Grant-in-Aid for JSPS Research Fellows 特別研究員奨励費	1		

How to Find Us!



[Approximately Required Time]

From Tokyo Station: 1 hour / From Shinjuku Station: 40 min. / From Haneda Airport: 1.5-2 hours / From Narita Airport: 2-3 hours
 東京駅から約1時間 / 新宿駅から約40分 / 羽田空港から約1.5から2時間 / 成田空港から約2から3時間

一橋大学経済研究所

Institute of Economic Research, Hitotsubashi University

<http://www.ier.hit-u.ac.jp>

https://twitter.com/IER_hit_u

2-1 Naka Kunitachi Tokyo 186-8603, JAPAN
 〒186-8603 東京都国立市中2-1

TEL: +81(0)42 580 8327 Fax: +81(0)42 580 8333

Email: www-info@ier.hit-u.ac.jp

Donations: The Institute of Economic Research, Hitotsubashi University is seeking donations to further expand its research activities and improve its facilities. Donations will be retained by the Frontier 4 Foundation and managed strictly by the Foundation's Operating Committee. For details see the Frontier 4 Foundation website (<http://www.kikin.ad.hit-u.ac.jp/>). Your cooperation and support are appreciated.

寄付金のお願い: 一橋大学経済研究所は、研究活動の更なる拡充及び施設の充実のために、皆様からのご寄付をお願いしております。寄付金は一橋大学基金に保管され、同運営委員会の厳格な管理の下で運営されます。詳しくは、一橋大学基金ウェブサイト (<http://www.kikin.ad.hit-u.ac.jp/>) をご覧ください。皆様のご協力とご支援をお願い申し上げます。