

## —Visit Us!—

### Database

The institute maintains and makes available to the public the Long-Term Economic Statistics (LTES) and other data and bibliographies.

- ◆ Long-Term Economic Statistics (LTES) Database
  - ◆ JIP database 2008
  - ◆ Farm account and family budget surveys in pre-WWII Japan
- etc.



Long-Term Economic Statistics (LTES), Toyo Keizai, 1968-1988.

### Publications

*The Economic Review* (since 1950) is highly regarded as one of the major academic general interest journal in economics in Japan. Research by institute staff is published as the *Economic Research Series*. In addition, the Research Centre for Information and Statistics publishes the "Statistical Data and Documentation Series" and each large scale project maintains its own Discussion Paper series (a total of 180 in the 2007 academic year).



### Library

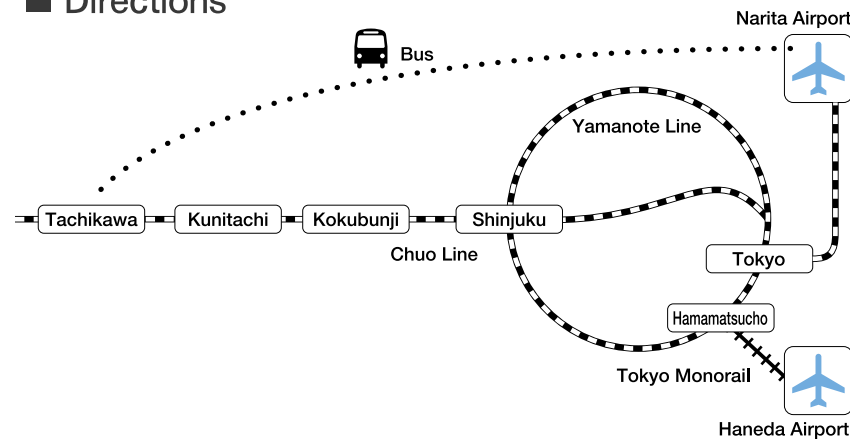
The libraries of the Institute and the Research Centre for Information and Statistics of Social Science (RCISS) house approximately 5.6 million volumes. The main Institute branch is primarily collecting statistical data and related references on various countries, particularly Russia and Asian nations, and is considered one of the best economics archives in Japan. Its Russian and Asian collections are considered one of the most comprehensive collections in Japan. The Center branch maintains a schematic collection of Japanese data starting from the Meiji era.



### Visiting Foreign Researchers

We have a very active exchange program with foreign researchers. Every year, about 20 people visit our institute for mid- and long-term periods of stay and engage in joint research projects. We provide various facilities for foreign visitors, including office space and accommodation.

### Directions



#### ● From Narita International Airport

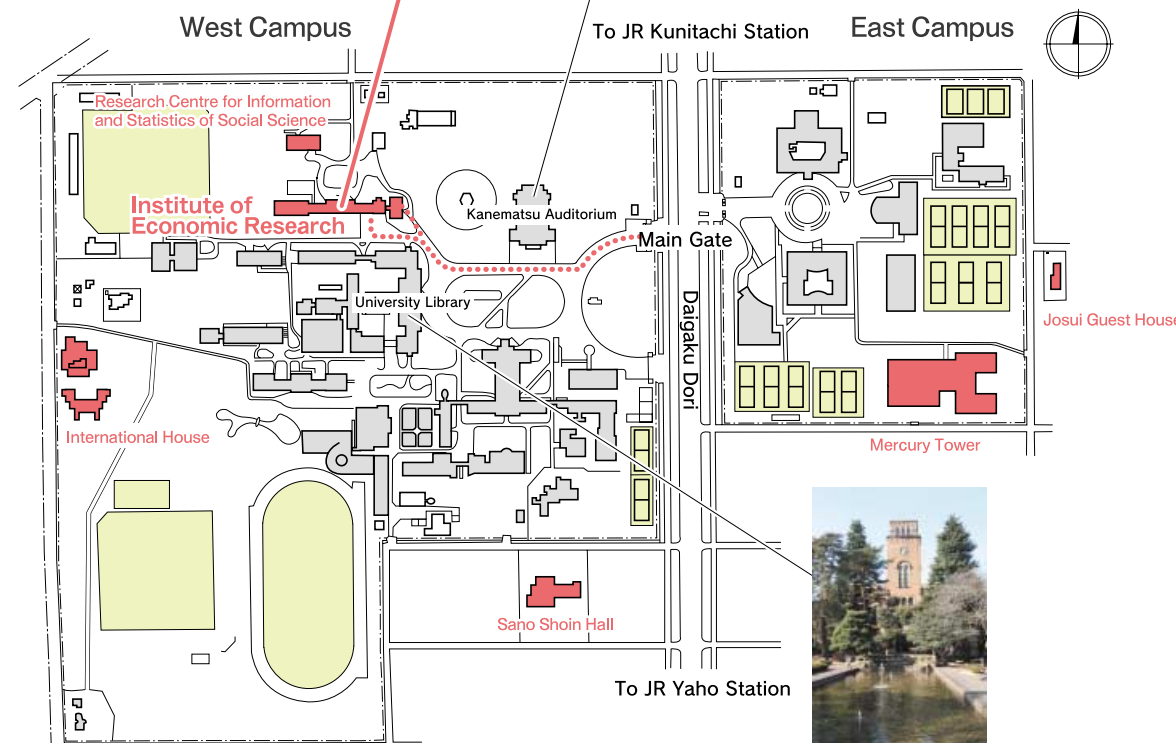
Take the Narita Express to Tokyo Station (approximately 60 minutes) or Shinjuku Station (approx. 80 minutes), then change to Chuo Line. Take the Chuo Line train to Kunitachi Station. Hitotsubashi University is approximately a 10-minute walk from the South Exit.

Alternatively, take the Airport Limousine bus from the airport to Tachikawa Station (approx. 170 minutes). Take the Chuo Line from Tachikawa Station to Kunitachi Station, it takes approximately 3 minutes.

#### ● From Haneda Airport

Take the Monorail to Hamamatsucho Station (approx. 25 minutes), then change to Yamanote Line. Take the Yamanote Line train to Tokyo Station (approx. 6 minutes), then change to Chuo Line. Take the Chuo Line train to Kunitachi Station (approx. 60 minutes).

### Campus Map



一橋大学経済研究所  
Institute of Economic Research, Hitotsubashi University

<http://www.ier.hit-u.ac.jp/English/>

2-1 Naka Kunitachi Tokyo 186-8603, JAPAN  
Tel : +81 (0) 42 580 8327 Fax : +81 (0) 42 580 8333  
Email: [www-info@ier.hit-u.ac.jp](mailto:www-info@ier.hit-u.ac.jp)

Copyright © 2008, Institute of Economic Research, Hitotsubashi University



Institute of Economic Research, Hitotsubashi University



2008

一橋大学経済研究所

## From the Director



Director,  
Institute of Economic Research  
**Tamotsu Nishizawa**

As a research center affiliated to Hitotsubashi University, the Institute of Economic Research (IER) has been actively producing research, and serves as a hub for collaborative research between domestic and international communities of researchers that is both original and leading-edge. The Institute's predecessor, the Institute of Research in East Asian Economy at Tokyo University of Commerce, dates back to 1940. It later became the Institute of Economic Research at Hitotsubashi University in 1949. The following year, 1950, marked the launch of *The Economic Review*, and The Economic Research Series has been published annually since 1953.

The institute has a history of successful collaborative research, guided by the founding purpose of conducting "comprehensive research on the Japanese and world economies". Of particular note is the 14-volume *Long-Term Economic Statistics* of Japan. Following on from this, during the 1995-1999 period, the institute undertook the "Asian Historical Statistics Project" to build a long-term economic statistical database for Asia, as one of the Center-of-Excellence (COE) projects of the Ministry of Education. The first volume from the project was published on December 2008, titled *Asian Historical Statistics: Taiwan*, Toyokeizai. Also, from 2000 to 2004 the institute organized the "Project on Intergenerational Equity", which was supported by a Grant-in-Aid for Scientific Research in Priority Areas by the Ministry of Education, Culture, Sports, Science and Technology, and promoted international joint research on pension, healthcare, population, labor and environmental issues.

Currently, the institute is engaged in Global COE program which started from this year: "Research Unit for Statistical and Empirical Analysis in Social Sciences" project that follows and develops former two 21st Century COE programs: "Research Unit for Statistical Analysis in the Social Sciences" project and the project on "Normative and Social Choice in Contemporary Economic Systems". Furthermore, the institute initiated two additional large-scale projects from 2006: "Understanding Inflation Dynamics of the Japanese Economy" financially supported by a Grant-in-Aid for Creative Scientific Research and "Economic Analysis of Intergenerational Issues" supported by a Grant-in-Aid for Specially Promoted Research. Moreover, "Design of Industrial-Financial Network that Enables Long-Term Growth" supported by a Research Aimed at Solutions of Near Future started from this year.

Currently, the institute is focused on running these major research projects as well as many joint research projects and promoting internationally the institute's collaborative facilities. The driving force behind these goals are the five research departments: Japanese and Asian Economies, U.S., European and Russian Economies, Contemporary Economies, Comparative Economic Systems, and Economic Systems Analysis and two affiliated research centers, as well as the Center for Intergenerational Studies which opened April 2007. The Research Centre for Information and Statistics of Social Science is extending the tentative offering of the government statistics microdata for academic research in cooperation with the Statistics Bureau of the Ministry of Internal Affairs and Communications. The Center for Economic Institutions is promoting international joint research involving databases on industry and firm productivity. Also, in order to encourage leading-edge research on intergenerational issues, the Center for Intergenerational Studies has begun functioning as a center of international collaborative research, cooperating with four central government ministries and agencies. Moreover, on November 1st, 2007, the Russian Research Center was established. This is an academic-industrial alliance research project on the Russian economy sponsored by Toyota Motor Corporation. Support and dissemination of research is provided by the IER library and other offices. The library serves the wider research community both as a library specialized in statistical information and as a data archive.

By engaging in fundamental and empirical research projects that are original and leading-edge, the institute, while maintaining its public service nature and sustainable research progress, is constantly growing as a hub for the collaboration of domestic and international researchers.

## Research Network

<http://rciess.ier.hit-u.ac.jp/English/>

**Trial System to Offer Microdata of Statistics Collected by the Japanese Government**  
Ministry of Internal Affairs and Communications

**Database Compilation from Farm Account and Family Budget Surveys in pre-WWII Japan**  
Kyoto University

<http://cei.ier.hit-u.ac.jp/English/>

**Construction of the Databases of Firm Productivity: Japan, Korea, and China**  
Japan Center for Economic Research; Gakushuin University; Nihon University; Senshu University; Tokyo Gakugei University

**Research Networks on Corporate Systems in East Asia and Japan**  
Waseda University; Keio University; University of Tokyo; Seoul National University; Korea University; Chinese University of Hong Kong; University of Alberta; ESCP-EAP

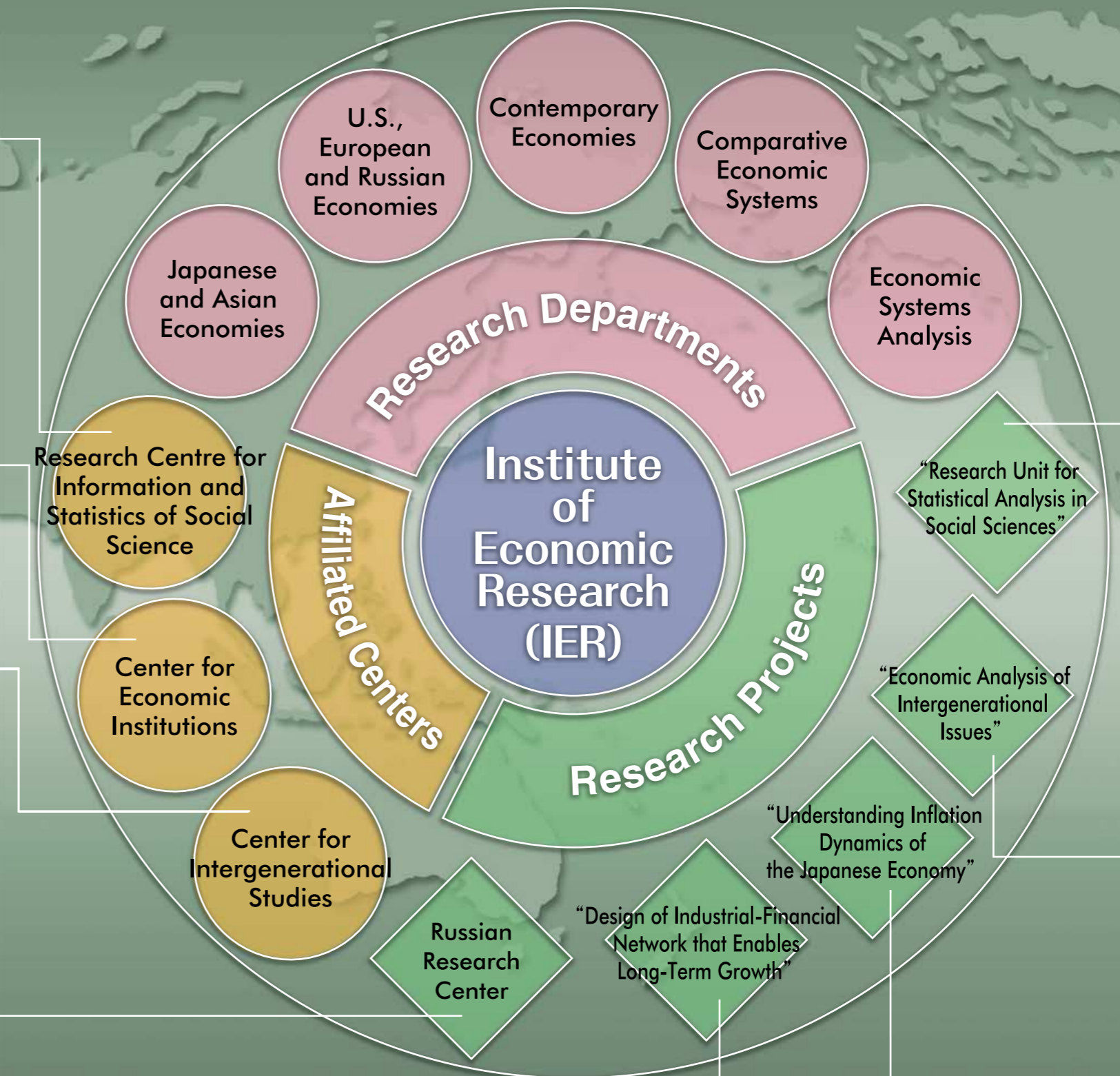
<http://cis.ier.hit-u.ac.jp/English/>

**Preparing for Setting up a New Scientific Area "Intergenerational Studies"**  
World Bank; Ifo Institute for Economic Research (Germany); Shanghai Academy of Social Sciences; Cabinet Office, Government of Japan; Ministry of Finance Japan; Ministry of Economy, Trade and Industry (METI); Ministry of Health, Labor and Welfare; Bank of Japan; Mitsubishi Research Institute, Inc.; Hosei Institute on Aging

<http://www.ier.hit-u.ac.jp/rrc/index-e.htm>

**Academic-Industrial Alliance Project: Sponsored Research Project of Toyota Motors Corporation Ltd.**  
Chatham House (UK); Higher School of Economics (Russian Federation); Slavic Research Center at Hokkaido University; Teikyo University

**Comprehensive Study of the Market Environments and State-Business Relationship in Russian Federation**  
Chatham House (UK); Higher School of Economics (Russian Federation); Russian Federal Statistical Office (Russian Federation); CIS Statistical Committee (Russian Federation); Slavic Research Center at Hokkaido University; Teikyo University



<http://gcoe.ier.hit-u.ac.jp/english/>

**Asian Historical Statistics Project**  
University of California; University of Groningen; London School of Economics and Political Science; National Taiwan University; Seoul National University; University of Malaya; University of Pittsburgh; l'Universite de Montpellier; Universite Marc Bloch; Chinese Academy of Social Sciences; Australian National University

**Creation of Japan Industrial Productivity (JIP) Database**  
Harvard University; EU KLEMS; Seoul National University; RIETI (Research Institute of Economy, Trade and Industry); ESRI (Economic and Social Research Institute, Cabinet Office, Government of Japan)

**Collection of Household Panel Data**  
Keio University

**Normative Evaluation and Social Choice of Contemporary Economic Systems**  
Waseda University; Universit s Paris V; Georgia State University; University of London; Yale University; University of New South Wales

**Accumulation of household, firm, and micro-regional survey data in Asian regions**  
Beijing Normal University; Fudan University; Thammasat University; Australian National University; University of Gothenburg

**Estimation and Application of DSGE Models**  
Economic and Social Research Institute; Cabinet Office; Government of Japan

**Economic Analysis of Aging Society**  
National University of Singapore

**Empirical Studies in the Agrarian Economy**  
Indian Statistical Institute

◆ Global COE Program

<http://www.ier.hit-u.ac.jp/pie/stage2/English/>

**Japanese Version of Health and Retirement Studies**  
University of Michigan; University of Mannheim; University of London; University of Tokyo; RIETI (Research Institute of Economy, Trade and Industry)

◆ Grant-in-Aid for Specially Promoted Research

[http://www.ier.hit-u.ac.jp/~ifd/index\\_e.html](http://www.ier.hit-u.ac.jp/~ifd/index_e.html)

**Research Network on Inflation Dynamics**  
Columbia University; Federal Reserve Board

**Database Construction on Wage**  
European Central Bank; RIETI (Research Institute of Economy, Trade and Industry)

**Research Workshop on Monetary Policy**  
Bank of Tokyo; University of Tokyo; Kyoto University

◆ Grant-in-Aid for Creative Scientific Research

◆ Research Aimed at Solutions of Near Future