

Corrigenda

for

Comparative Economic Development in India, Pakistan, and Bangladesh: Agriculture in the 20th Century

(by Takashi Kurosaki, 2017, Tokyo: Maruzen Publishers, ISBN978-4-621-30136-4 C3333)

Takashi Kurosaki[#]

April 2024

Mistakes were found in the compilation process of the crop statistics for areas currently in Bangladesh. They are thus corrected in this corrigenda note. In the tables that follow, the corrected numbers are marked with yellow color. Some typo errors on table captions were found as well. They are corrected in red fonts.

The first mistake in data compilation is the unit of sugarcane output for areas currently in Bangladesh. The time series in Table A.7 needs to be multiplied by the factor of 10.

The second mistake is the implicit prices in 1959/60 to aggregate outputs of principal crops in areas currently in Bangladesh. Table A.8 has been revised to show the correct prices.

As a result of correcting these mistakes, series Q (total output value from major crops in constant prices) and series Y (value added from all crops in constant prices) for Bangladesh are revised. Table A.11 has been revised to show the correct series.

These two sets of correction result in revisions for most tables and figures in Chapter 2 regarding Bangladesh today and areas currently in Bangladesh during the colonial period. The magnitude of revisions is small, however, so that most of empirical findings in the book remain qualitatively the same. In tables, the revision occurs usually in the lower digits only. In figures based on revised data, the differences from figures based on wrong data are mostly non-detectable. In a few cases, interesting changes are observed with qualitatively different results. First, as shown in Table 2.3, Bangladeshi agriculture performed significantly better than in India after the Partition and it performed significantly better than in Pakistan after Bangladesh's independence. In the previous version, the direction of differences was similar but statistically insignificant. Second, in Table 2.4, for areas currently in Bangladesh during the 1960s, the total land productivity growth was almost zero. Therefore, the revised table does not show the relative contribution. However, the statement in the book regarding the contribution of sugarcane expansion to the overall land productivity growth during the 1960s remains valid, as shown in the static crop shift effect at 0.54% per year, much higher than the post-1947 average

[#] Institute of Economic Research, Hitotsubashi University, 2-1 Naka, Kunitachi, Tokyo 186-8603 Japan.
E-mail: kurosaki@ier.hit-u.ac.jp.

at 0.25%.

In estimating GDP for areas currently in India, Pakistan, and Bangladesh for the pre-Partition period, series Y (value added from all crops in constant prices) is used to estimate value added from the livestock sector and to estimate value added from all other sectors. Therefore, GDP for areas currently in Bangladesh during the pre-Partition period is revised directly. Furthermore, as the estimation is based on Sivasubramonian's GDP estimates for undivided India, GDP for areas currently in India and GDP for areas currently in Pakistan during the pre-Partition period are also revised indirectly. This necessitates revisions for some tables and the figure in Chapter 3. However, the revision does not affect empirical findings qualitatively.

Figure 2.1 Agricultural value-added (Y) in India, Pakistan, and Bangladesh, 1901/02–2001/02 (p.22 of the book)

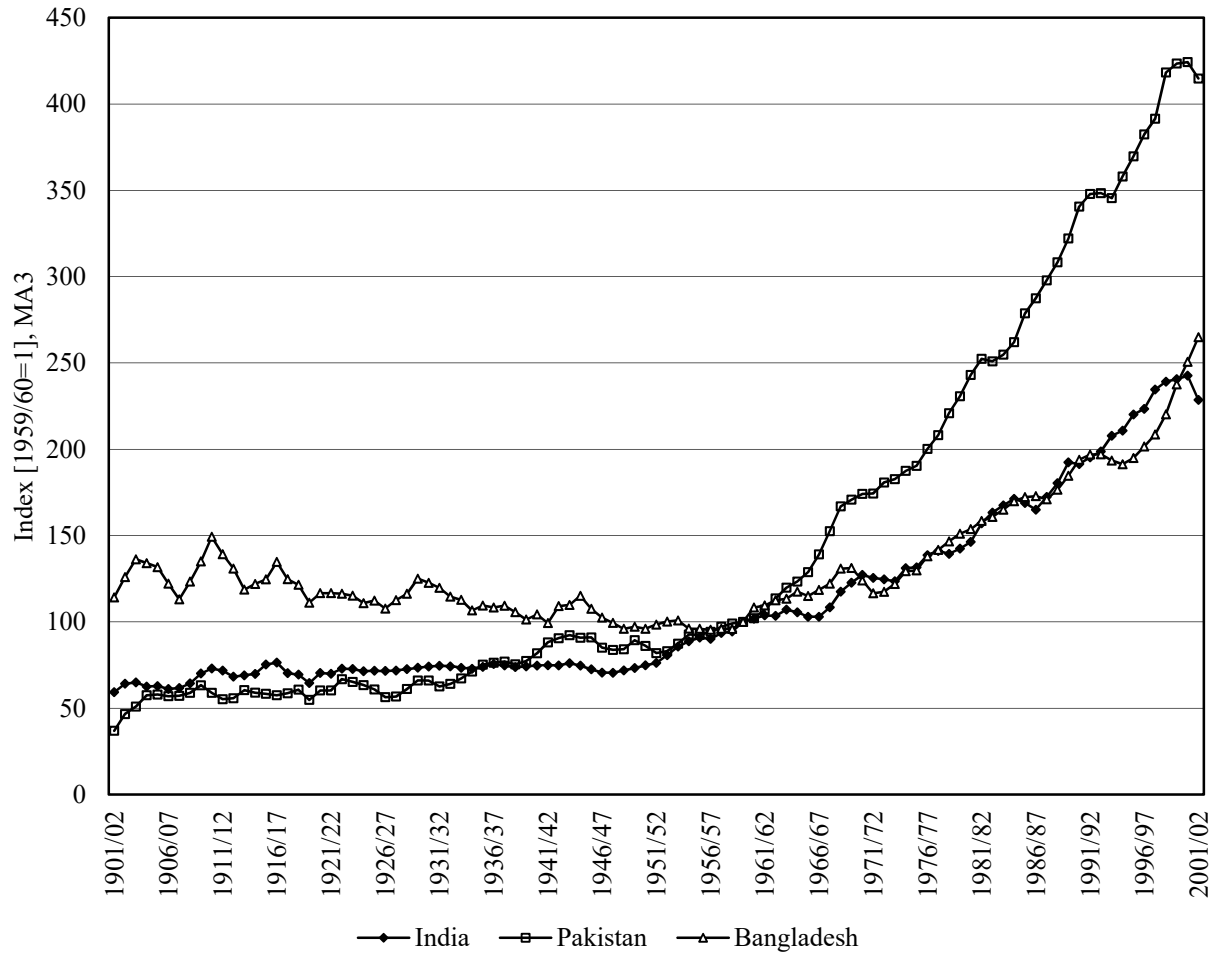


Table 2.1 Agricultural growth rates in India, Pakistan, and Bangladesh, 1901/02–2001/02
(p.23 of the book)

	Y (total value-added)		Y/L (labor productivity)		Y/A (land productivity)	
	Ann.gr.rate	CV	Ann.gr.rate	CV	Ann.gr.rate	CV
Areas currently in India (-1946/47), India (1947/48-)						
1901/02 - 1946/47	0.37% ***	7.3%	0.11%	7.8%	0.14% *	7.3%
1947/48 - 2000/01	2.28% ***	5.7%	0.81% ***	6.4%	2.15% ***	5.8%
1901/02 - 1910/11	1.36%	8.9%	0.63%	8.9%	0.52%	9.3%
1911/12 - 1920/21	-0.70%	11.9%	-0.69%	11.9%	-0.39%	11.8%
1921/22 - 1930/31	0.09%	2.5%	0.08%	2.5%	-0.22%	2.9%
1931/32 - 1940/41	0.27%	3.2%	-0.09%	3.2%	0.40%	3.0%
1941/42 - 1950/51	-0.25%	3.8%	-1.78% ***	3.8%	-0.34%	4.3%
1951/52 - 1960/61	2.99% ***	4.3%	2.02% ***	4.3%	2.77% ***	4.1%
1961/62 - 1970/71	2.30% **	7.9%	0.32%	7.9%	2.11% **	7.9%
1971/72 - 1980/81	1.96% **	7.0%	0.53%	7.0%	1.72% *	7.0%
1981/82 - 1990/91	2.08% ***	5.3%	0.68%	5.3%	2.04% ***	5.3%
1991/92 - 2000/01	2.63% ***	4.1%	1.52% *	4.1%	2.65% ***	4.1%
Areas currently in Pakistan (-1946/47), Pakistan (1947/48-)						
1901/02 - 1946/47	1.24% ***	12.8%	0.76% ***	12.5%	0.47% ***	11.2%
1947/48 - 2000/01	3.46% ***	7.0%	1.84% ***	7.3%	2.70% ***	7.9%
1901/02 - 1910/11	4.36% **	14.5%	2.92%	14.5%	1.81%	13.2%
1911/12 - 1920/21	-0.21%	14.2%	-0.77%	14.2%	-0.71%	13.9%
1921/22 - 1930/31	-0.61%	10.3%	-0.49%	10.3%	-1.30%	9.2%
1931/32 - 1940/41	2.79% ***	5.3%	2.19% ***	5.3%	2.02% *	5.5%
1941/42 - 1950/51	-0.51%	6.5%	-1.63% *	6.5%	-0.46%	5.8%
1951/52 - 1960/61	2.76% ***	5.6%	1.84% **	5.5%	1.16%	7.0%
1961/62 - 1970/71	5.77% ***	4.6%	4.57% ***	4.6%	4.88% ***	5.3%
1971/72 - 1980/81	3.58% ***	3.0%	1.30% ***	3.0%	2.87% ***	3.1%
1981/82 - 1990/91	3.34% ***	4.3%	1.46% **	4.3%	2.95% ***	4.1%
1991/92 - 2000/01	2.56% ***	5.2%	1.35% *	5.2%	2.07% **	5.6%
Areas currently in Bangladesh (-1946/47), East Pakistan (1947/48-), Bangladesh (1971/72-)						
1901/02 - 1946/47	-0.51% ***	10.1%	-0.83% ***	10.5%	-0.50% ***	9.9%
1947/48 - 2000/01	1.78% ***	7.2%	0.56% ***	6.9%	1.91% ***	8.2%
1901/02 - 1910/11	0.88%	13.6%	-0.27%	13.6%	1.19%	12.6%
1911/12 - 1920/21	-1.72%	11.2%	-2.50% *	11.2%	-2.15%	11.2%
1921/22 - 1930/31	0.59%	8.0%	0.66%	8.0%	0.75%	7.8%
1931/32 - 1940/41	-1.57% *	7.5%	-1.51%	7.5%	-1.46%	7.9%
1941/42 - 1950/51	-1.51%	8.9%	-1.63%	8.9%	-1.70% *	7.8%
1951/52 - 1960/61	0.32%	7.2%	-0.82%	7.3%	0.72%	6.8%
1961/62 - 1970/71	2.13% ***	4.9%	0.90%	4.9%	1.79% **	5.1%
1971/72 - 1980/81	3.89% ***	4.3%	3.13% ***	4.3%	3.85% ***	4.3%
1981/82 - 1990/91	1.99% ***	3.3%	0.03%	3.3%	2.71% ***	3.5%
1991/92 - 2000/01	2.78% ***	6.4%	1.76% **	6.5%	2.40% ***	5.5%

Notes: "Ann.gr.rate" is the annual growth rate, estimated by a time-series regression of equation (2-1).

"CV" is the coefficient of variation, calculated from residuals in the same time-series regression.

Statistically significant at the 1% ***, 5% **, and 10% * levels.

Source: Calculated by the author using the dataset described in the text (same for the following tables and figures).

Figure 2.2 Agricultural labor productivity (Y/L) in India, Pakistan, and Bangladesh, 1901/02–2001/02 (p.24 of the book)

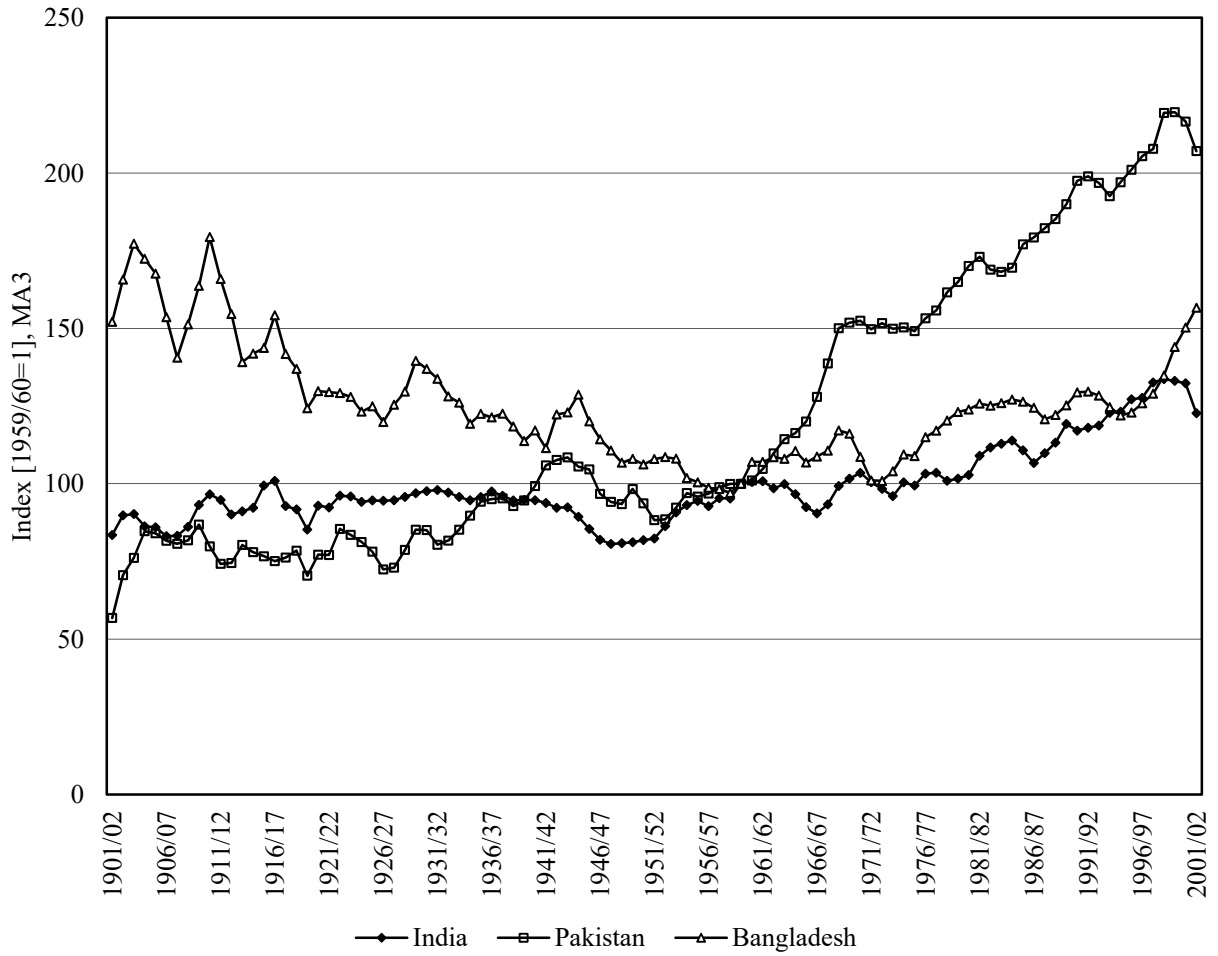
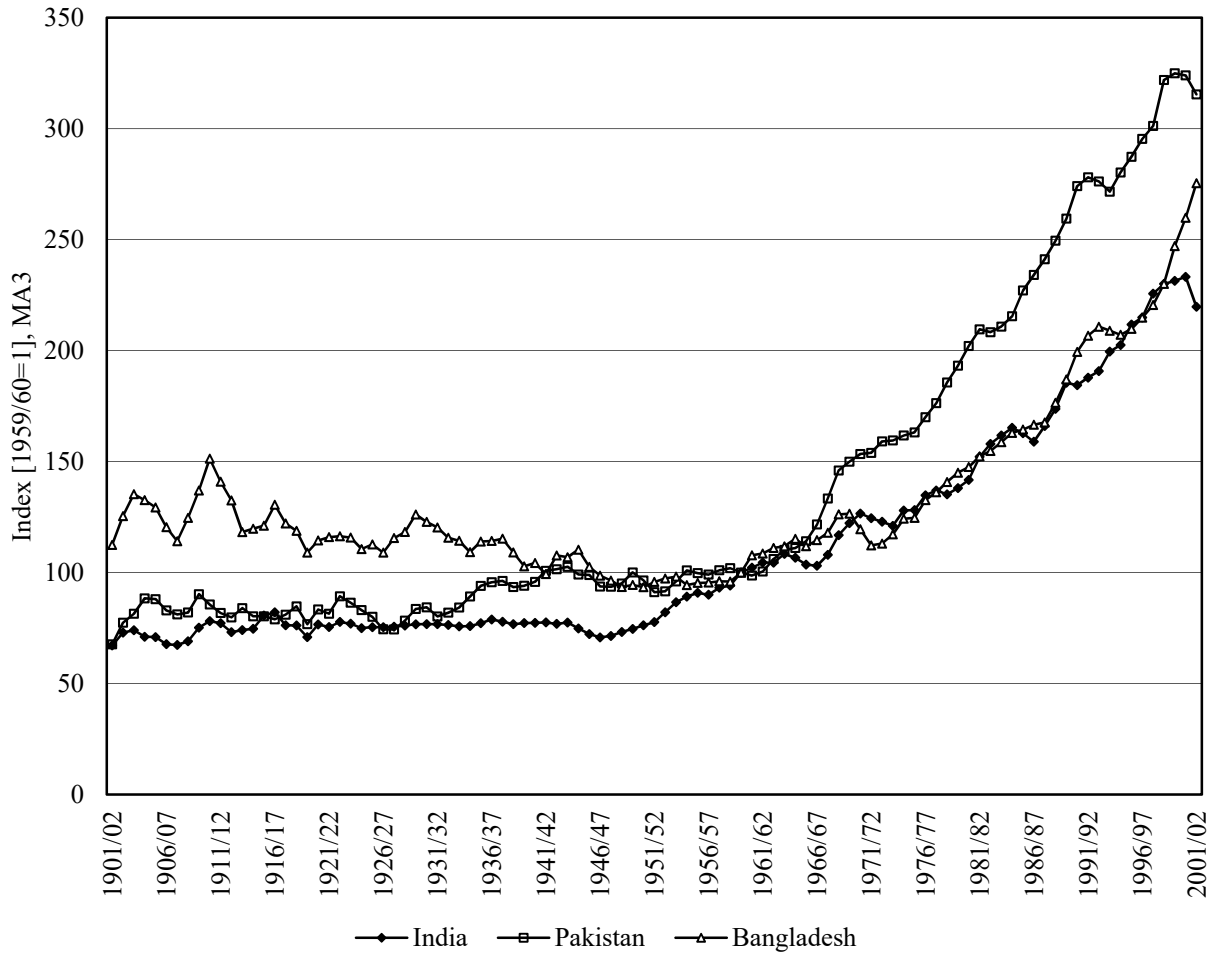


Figure 2.3 Aggregate land productivity (Y/A) in India, Pakistan, and Bangladesh, 1901/02–2001/02 (p.25 of the book)



**Table 2.2 Decomposition of aggregate agricultural growth into extensive and intensive expansion
(p.26 of the book)**

	Annual growth rate in Y (%)				Relative contribution (%)		
	Growth rate in Y/A (intensive expansion)			Total	Growth rate in Y/A (intensive expansion)		
	Growth rate in A (extensive expansion)	Land use intensity (gross cropped area/total area cultivated)	Output per gross cropped area		Growth rate in A (extensive expansion)	Land use intensity (gross cropped area/total area cultivated)	Output per gross cropped area
Areas currently in India (-1946/47), India (1947/48-)							
1901/02 - 1946/47	0.24	0.24	-0.10	0.38	64.4	62.1	-26.5
1947/48 - 2001/02	0.10	0.39	1.69	2.18	4.4	17.8	77.7
1901/02 - 1911/12	0.53	0.55	0.84	1.92	27.7	28.5	43.8
1911/12 - 1921/22	-0.04	0.25	-0.47	-0.26	13.6	-96.9	183.3
1921/22 - 1931/32	0.47	0.22	-0.05	0.63	73.6	34.3	-7.9
1931/32 - 1941/42	-0.06	0.21	-0.11	0.04	n.a.	n.a.	n.a.
1941/42 - 1951/52	0.16	1.37	-1.35	0.18	87.7	756.6	-744.2
1951/52 - 1961/62	0.12	0.42	2.55	3.08	3.8	13.6	82.6
1961/62 - 1971/72	0.15	0.31	1.44	1.90	8.0	16.4	75.6
1971/72 - 1981/82	0.24	0.35	1.66	2.25	10.6	15.6	73.7
1981/82 - 1991/92	0.07	-0.70	2.81	2.18	3.2	-32.2	129.0
1991/92 - 2001/02	0.00	0.20	1.37	1.57	0.2	12.9	86.9
Areas currently in Pakistan (-1946/47), Pakistan (1947/48-)							
1901/02 - 1946/47	1.07	0.10	0.61	1.78	60.3	5.4	34.3
1947/48 - 2001/02	0.71	0.35	1.89	2.96	24.1	12.0	63.9
1901/02 - 1911/12	2.13	0.25	1.64	4.02	53.0	6.2	40.8
1911/12 - 1921/22	0.90	0.12	-0.15	0.88	102.6	14.0	-16.6
1921/22 - 1931/32	0.54	0.07	-0.24	0.38	144.6	18.0	-62.6
1931/32 - 1941/42	1.13	0.49	1.81	3.42	33.0	14.2	52.8
1941/42 - 1951/52	0.28	-0.32	-0.69	-0.73	-38.4	44.1	94.3
1951/52 - 1961/62	1.71	-0.71	1.67	2.68	63.9	-26.3	62.5
1961/62 - 1971/72	0.60	0.83	3.44	4.87	12.4	17.1	70.5
1971/72 - 1981/82	0.61	0.87	2.22	3.70	16.5	23.5	60.0
1981/82 - 1991/92	0.38	0.67	2.15	3.21	12.0	20.9	67.1
1991/92 - 2001/02	0.50	0.09	1.18	1.76	28.2	4.9	66.9
Areas currently in Bangladesh (-1946/47), East Pakistan (1947/48-), Bangladesh (1971/72-)							
1901/02 - 1946/47	0.03	-0.05	-0.28	-0.30	-10.8	16.6	94.2
1947/48 - 2001/02	-0.13	0.63	1.31	1.82	-7.1	34.8	72.3
1901/02 - 1911/12	-0.26	0.99	1.25	1.98	-15.2	58.2	57.0
1911/12 - 1921/22	0.17	-0.56	-1.38	-1.77	-10.6	34.6	76.0
1921/22 - 1931/32	-0.12	0.01	0.36	0.26	-33.5	2.7	130.9
1931/32 - 1941/42	0.05	0.08	-1.99	-1.87	-4.0	-6.6	110.7
1941/42 - 1951/52	0.27	-0.48	0.12	-0.09	n.a.	n.a.	n.a.
1951/52 - 1961/62	-0.19	-0.03	1.29	1.07	-16.9	-3.1	120.0
1961/62 - 1971/72	0.29	0.69	-0.35	0.62	29.7	70.9	-0.6
1971/72 - 1981/82	0.02	1.06	2.00	3.07	0.6	37.3	62.0
1981/82 - 1991/92	-0.87	0.91	2.14	2.17	-43.9	45.8	98.1
1991/92 - 2001/02	0.09	0.52	2.36	2.97	4.0	22.7	73.3

Notes: The decomposition is based on equation (2-2). When the annual growth rate in Y was less than 0.1%, the decomposition was not implemented and shown with "n.a." Since the annual growth rates in this table are calculated by growth accounting methods using MA3 data, they are not exactly the same as the regression based growth rates in Table 2.1.

**Table 2.3 Regional disparity in the acceleration in growth rates and the political regime
(p.28 of the book)**

	<i>Y</i>	<i>Y/L</i>	<i>Y/A</i>
1. Impact of the Partition 1947			
(a) Acceleration in growth rates since 1947 (parameter b_1)			
India	1.91% ***	0.69% ***	2.01% ***
Pakistan	2.21% ***	1.08% ***	2.23% ***
Bangladesh	2.29% ***	1.39% ***	2.41% ***
(b) Statistical test (chi2 statistics) for the difference in acceleration			
India=Pakistan ($b_1^I = b_1^P$)	3.69 *	5.16 **	2.23
Pakistan=Bangladesh ($b_1^P = b_1^B$)	0.24	3.28 *	1.18
Bangladesh=India ($b_1^B = b_1^I$)	10.20 ***	25.78 ***	10.78 ***
India=Pakistan=Bangladesh	11.16 ***	25.78 ***	11.12 ***
2. Impact of the Bangladesh's Independence 1971			
(a) Acceleration in growth rates since 1971 (parameter b_1)			
Pakistan	-0.13%	-0.88% ***	0.79% ***
Bangladesh	0.85% ***	0.57% **	1.35% ***
(b) Statistical test (chi2 statistics) for the difference in acceleration			
Pakistan=Bangladesh ($b_1^P = b_1^B$)	15.07 ***	27.66 ***	4.18 **

Notes: Based on a DID model shown in equation (3). Acceleration in growth rates were estimated by SUR (system of equations corresponding to each country). For part (a), the number of observations is 100 (1901/02 to 2000/01). For Part (b), the number of observations is 54 (1947/48 to 2000/01).

Table 2.4 Contribution of crop shifts to the aggregate land productivity
(p.37 of the book)

		Annual growth rates (%) of land productivity (Q/A')				Relative contribution (%)		
		Individual crop yield effect	Static crop shift effect	Dynamic crop shift effect	Total	Individual crop yield effect	Static crop shift effect	Dynamic crop shift effect
India	1901/02 - 1946/47	-0.15	0.01	0.15	0.00	n.a.	n.a.	n.a.
	1947/48 - 2001/02	2.38	0.26	0.66	3.30	72.1	8.0	20.0
	1901/02 - 1911/12	0.92	-0.05	-0.06	0.81	113.4	-6.3	-7.1
	1911/12 - 1921/22	-0.24	-0.10	0.07	-0.27	88.5	36.4	-24.9
	1921/22 - 1931/32	0.03	0.27	-0.08	0.23	14.1	119.1	-33.3
	1931/32 - 1941/42	-0.36	0.30	-0.06	-0.11	324.5	-277.5	53.0
	1941/42 - 1951/52	-1.49	0.30	-0.02	-1.21	123.0	-24.5	1.5
	1951/52 - 1961/62	2.76	0.14	-0.01	2.89	95.3	5.0	-0.3
	1961/62 - 1971/72	1.55	0.15	0.20	1.90	81.6	8.0	10.3
	1971/72 - 1981/82	1.83	0.35	0.09	2.28	80.6	15.4	4.0
	1981/82 - 1991/92	3.10	0.44	0.14	3.68	84.2	12.1	3.7
1991/92 - 2001/02	0.87	0.59	0.06	1.51	57.5	38.7	3.7	
Pakistan	1901/02 - 1946/47	0.55	-0.03	0.22	0.74	74.5	-4.0	29.6
	1947/48 - 2001/02	2.46	0.48	0.63	3.57	68.9	13.4	17.7
	1901/02 - 1911/12	1.84	-0.19	0.09	1.74	105.4	-10.8	5.4
	1911/12 - 1921/22	0.06	-0.05	0.02	0.02	n.a.	n.a.	n.a.
	1921/22 - 1931/32	-0.35	0.03	0.02	-0.31	113.4	-8.5	-4.9
	1931/32 - 1941/42	1.51	0.16	0.32	1.99	75.8	8.2	16.0
	1941/42 - 1951/52	-0.80	0.18	0.03	-0.58	136.6	-30.6	-6.0
	1951/52 - 1961/62	1.03	0.85	0.03	1.92	53.8	44.4	1.8
	1961/62 - 1971/72	3.37	0.52	0.28	4.16	80.8	12.5	6.7
	1971/72 - 1981/82	1.72	0.63	0.13	2.49	69.2	25.4	5.4
	1981/82 - 1991/92	2.35	0.07	0.21	2.63	89.3	2.5	8.2
1991/92 - 2001/02	1.19	0.23	0.02	1.43	82.8	16.1	1.1	
Bangladesh, treating 3 different rice as different "crops"								
	1901/02 - 1946/47	-0.25	-0.01	0.01	-0.25	99.6	5.7	-5.3
	1947/48 - 2001/02	1.55	0.25	0.41	2.22	70.0	11.4	18.6
	1901/02 - 1911/12	1.40	-0.03	-0.07	1.30	107.8	-2.2	-5.6
	1911/12 - 1921/22	-1.11	-0.11	0.00	-1.22	91.1	9.0	0.0
	1921/22 - 1931/32	0.27	0.04	0.06	0.38	72.7	10.3	17.0
	1931/32 - 1941/42	-2.18	0.41	-0.06	-1.83	118.9	-22.3	3.5
	1941/42 - 1951/52	0.93	-0.51	-0.18	0.23	395.4	-217.4	-78.0
	1951/52 - 1961/62	1.61	-0.10	0.01	1.52	106.1	-6.4	0.3
	1961/62 - 1971/72	-0.71	0.54	0.10	-0.07	n.a.	n.a.	n.a.
	1971/72 - 1981/82	2.15	-0.06	0.19	2.28	94.2	-2.6	8.5
	1981/82 - 1991/92	1.62	0.99	-0.03	2.58	62.8	38.4	-1.2
	1991/92 - 2001/02	2.07	0.55	0.18	2.80	73.8	19.8	6.5
Bangladesh, treating 3 different rice as 1 crop								
	1901/02 - 1946/47	-0.27	0.02	0.00	-0.25	107.9	-7.1	-0.8
	1947/48 - 2001/02	2.27	-0.12	0.07	2.22	102.4	-5.4	3.0

Notes: When the aggregate land productivity growth rate was less than 0.1% in absolute terms, we do not show decomposition results but indicate "n.a.".

Figure 3.1 Agricultural share in real GDP in the long-run
(p.45 of the book)

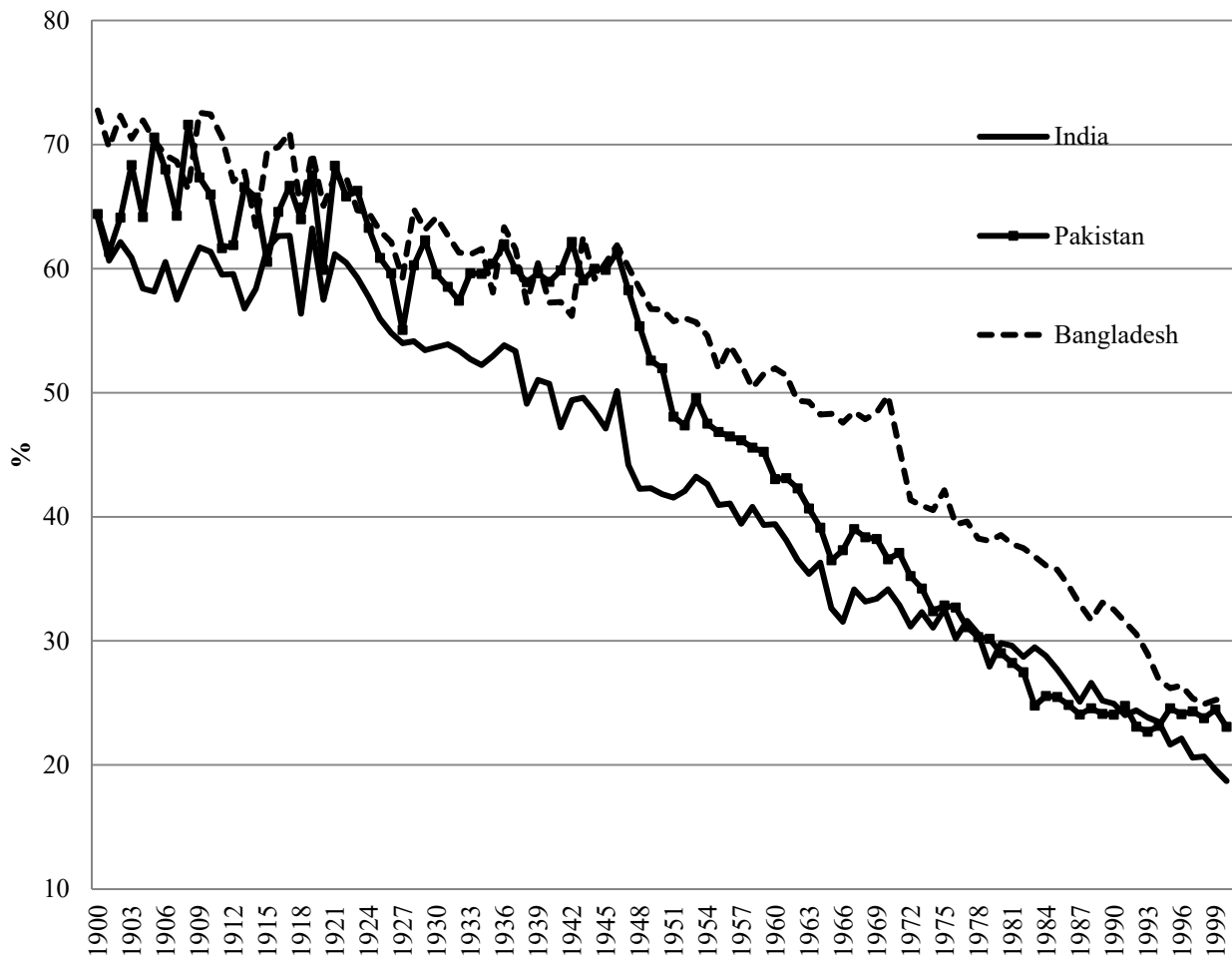


Table 3.1 Decomposition of real GDP growth into direct and indirect contributions of agriculture (pp.48-49 of the book)

	Annual growth rate in Y (%)			Linkage parameter ¹		Relative contribution ² (%)		
	GDP	Agriculture	Non-agriculture	Parameter estimate	(standard error)	Agriculture, direct	Agriculture, indirect	Non-agriculture, autonomous
Areas currently in India (-1946/47), India (1950/51-)								
1900/01 - 1910/11	1.95	1.51	2.68	0.011	(0.196)	50.1	0.0	49.9
1910/11 - 1920/21	-0.62	-1.27	0.33	-0.134	(0.111)	119.3	0.0	-19.3
1920/21 - 1930/31	2.29	1.61	3.15	-0.140	(0.276)	40.8	0.0	59.2
1930/31 - 1940/41	1.01	0.44	1.63	-0.556 **	(0.227)	24.0	-11.5	87.5
1940/41 - 1946/47	-0.67	-0.86	-0.47	-0.739	(0.553)	65.5	0.0	34.5
1950/51 - 1960/61	3.83	3.24	4.24	0.145	(0.110)	35.5	0.0	64.5
1960/61 - 1970/71	3.63	2.20	4.46	0.088	(0.059)	24.3	0.0	75.7
1970/71 - 1980/81	3.03	1.67	3.67	0.169 **	(0.068)	19.1	6.2	74.6
1980/81 - 1990/91	5.24	3.45	5.91	0.112 *	(0.063)	19.9	5.2	74.9
1990/91 - 2000/01	5.55	2.68	6.35	0.058	(0.162)	12.3	0.0	87.7
Areas currently in Pakistan (-1946/47), Pakistan (1950/51-)								
1900/01 - 1910/11	3.91	4.15	3.46	-0.072	(0.070)	68.5	0.0	31.5
1910/11 - 1920/21	-0.68	-1.65	0.96	0.030	(0.098)	143.1	0.0	-43.1
1920/21 - 1930/31	3.08	3.02	3.17	-0.108	(0.066)	58.7	0.0	41.3
1930/31 - 1940/41	1.86	1.76	2.01	0.150	(0.207)	56.3	0.0	43.7
1940/41 - 1946/47	1.73	2.40	0.73	0.344	(0.345)	82.5	0.0	17.5
1950/51 - 1960/61	3.15	1.26	4.85	-0.017	(0.128)	22.0	0.0	78.0
1960/61 - 1970/71	6.18	4.55	7.25	-0.086	(0.303)	32.2	0.0	67.8
1970/71 - 1980/81	5.24	2.92	6.37	-0.217	(0.496)	20.9	0.0	79.1
1980/81 - 1990/91	5.83	3.97	6.51	-0.059	(0.113)	19.9	0.0	80.1
1990/91 - 2000/01	4.04	3.62	4.16	0.134	(0.076)	21.6	0.0	78.4

(Continued to the next page)

Table 3.1 (Continued from the previous page)

Areas currently in Bangladesh (-1946/47), East Pakistan (1950/51-), Bangladesh (1972/73-)								
1900/01 - 1910/11	2.29	2.25	2.40	0.170 *	(0.081)	71.4	4.6	24.0
1910/11 - 1920/21	-2.06	-3.13	0.31	-0.218 **	(0.079)	104.0	-8.6	4.7
1920/21 - 1930/31	1.86	1.71	2.12	-0.047	(0.130)	60.1	0.0	39.9
1930/31 - 1940/41	-1.23	-2.36	0.52	-0.042	(0.089)	114.1	0.0	-14.1
1940/41 - 1946/47	-0.59	0.70	-2.50	0.192	(0.154)	-59.6	0.0	159.6
1950/51 - 1960/61	2.11	1.24	3.26	0.180 ***	(0.039)	33.2	4.6	62.2
1960/61 - 1970/71	2.07	1.64	2.56	0.745 **	(0.236)	40.9	28.1	31.0
1972/73 - 1980/81	3.60	2.72	4.19	0.335	(0.291)	31.4	0.0	68.6
1980/81 - 1990/91	3.76	2.07	4.70	0.040	(0.108)	21.6	0.0	78.4
1990/91 - 2000/01	4.79	2.30	5.80	-0.201 ***	(0.052)	16.1	-6.7	90.7

Notes: 1. Estimated by OLS using equation (3-2). Statistically significant at 10% (*), 5% (**), and 1% (***). 2. Decomposition is conducted using equation (3-3) when the linkage parameter is statistically significant. The component "Agriculture, indirect" is set at zero if the parameter is insignificant. "Non-agriculture, autonomous" is calculated as the residual.

**Table 3.3 Decomposition of real GDP growth, colonial period readjusted with a one-year lag
(p.52 of the book)**

	Annual growth rate in Y (%)			Linkage parameter ¹		Relative contribution ² (%)		
	GDP	Agriculture	Non-agriculture	Parameter estimate	(standard error)	Agriculture, direct	Agriculture, indirect	Non-agriculture, autonomous
Areas currently in India (-1946/47)								
1900/01 - 1910/11	1.95	1.51	2.68	0.172	(0.137)	50.1	0.0	49.9
1910/11 - 1920/21	-0.62	-1.27	0.33	0.055	(0.130)	119.3	0.0	-19.3
1920/21 - 1930/31	2.29	1.61	3.15	0.172	(0.174)	40.8	0.0	59.2
1930/31 - 1940/41	1.01	0.44	1.63	0.180	(0.303)	24.0	0.0	76.0
1940/41 - 1946/47	-0.67	-0.86	-0.47	0.983 *	(0.387)	65.5	62.6	-28.1
Areas currently in Pakistan (-1946/47)								
1900/01 - 1910/11	3.91	4.15	3.46	0.095 *	(0.047)	68.5	3.6	27.9
1910/11 - 1920/21	-0.68	-1.65	0.96	0.059	(0.107)	143.5	0.0	-43.5
1920/21 - 1930/31	3.08	3.02	3.17	0.102	(0.060)	58.8	0.0	41.2
1930/31 - 1940/41	1.86	1.76	2.01	-0.180	(0.162)	56.8	0.0	43.2
1940/41 - 1946/47	1.73	2.40	0.73	-0.127	(0.409)	82.5	0.0	17.5
Areas currently in Bangladesh (-1946/47)								
1900/01 - 1910/11	2.29	2.25	2.40	-0.048	(0.085)	71.8	0.0	28.2
1910/11 - 1920/21	-2.06	-3.13	0.31	0.188 *	(0.092)	68.5	3.6	27.9
1920/21 - 1930/31	1.86	1.71	2.12	0.100	(0.115)	60.1	0.0	39.9
1930/31 - 1940/41	-1.23	-2.36	0.52	-0.032	(0.090)	112.1	0.0	-12.1
1940/41 - 1946/47	-0.59	0.70	-2.50	-0.087	(0.172)	-79.4	0.0	179.4

Notes: See Table 3.1.

Table A.7 (Continued from the previous page)
(p.87 of the book)

	Output (1000 metric tonnes)						
	Rape and mustard (10)	Ground- nut (11)	Sugar- cane (12)	Tea (13)	Tabacco (14)	Cotton (15)	Jute (16)
1901/02	126.9	0.00	2560	10.0	80.4	2.7	1047.5
1902/03	116.7	0.00	2534	9.5	77.0	3.3	926.3
1903/04	123.0	0.00	2516	11.1	77.6	3.0	1019.8
1904/05	124.7	0.00	2534	11.6	76.5	3.7	1042.2
1905/06	96.5	0.00	1986	11.6	62.8	3.3	1146.5
1906/07	112.5	0.00	1984	13.0	63.6	4.8	1296.5
1907/08	95.4	0.00	2369	13.3	58.1	3.0	1382.7
1908/09	76.8	0.00	1591	13.3	84.9	3.6	888.8
1909/10	151.2	0.00	1848	13.2	88.5	4.6	1015.0
1910/11	157.9	0.00	2140	14.2	84.8	3.7	1117.1
1911/12	138.3	0.00	2214	14.3	81.0	3.2	1159.8
1912/13	148.2	0.00	2189	15.6	84.2	4.4	1386.2
1913/14	154.5	0.00	2165	17.6	56.2	4.9	1252.6
1914/15	119.5	0.00	1960	16.7	82.8	5.0	1477.9
1915/16	130.8	0.00	2086	19.6	88.8	3.6	1034.3
1916/17	146.9	0.00	2044	20.0	83.6	4.3	1170.2
1917/18	145.2	0.00	2284	20.1	65.7	3.9	1248.8
1918/19	101.4	0.00	2137	20.2	90.8	3.8	979.6
1919/20	119.5	0.00	2550	22.2	82.6	5.6	1194.4
1920/21	102.8	0.00	2378	15.8	79.3	3.7	833.0
1921/22	110.7	0.00	2456	13.0	84.0	4.7	561.2
1922/23	99.0	0.01	2147	16.1	86.0	5.3	761.6
1923/24	94.5	0.01	2257	19.5	72.8	5.4	1183.2
1924/25	113.0	0.01	1975	19.5	74.3	6.3	1135.4
1925/26	88.5	0.01	2374	19.2	60.3	6.5	1259.1
1926/27	95.4	0.01	2201	21.0	49.2	5.2	1708.6
1927/28	99.0	0.02	2313	21.6	76.4	6.2	1434.8
1928/29	106.9	0.02	2231	21.6	63.8	6.0	1395.1
1929/30	105.8	0.03	2238	25.0	66.9	5.5	1455.5
1930/31	101.5	0.03	2363	21.9	61.1	5.5	1578.1
1931/32	98.0	0.04	2485	20.2	59.8	4.3	780.5
1932/33	105.1	0.05	3296	24.7	65.1	4.7	996.0
1933/34	106.8	0.13	4654	22.4	58.3	5.3	1124.8
1934/35	113.6	0.07	5043	22.3	65.4	5.0	1197.1
1935/36	95.9	0.28	5260	21.8	61.0	6.2	1016.1
1936/37	132.1	0.11	5213	23.3	69.6	5.0	1326.3
1937/38	112.0	0.13	4160	25.4	68.3	4.6	1194.5
1938/39	106.2	0.16	3953	24.9	66.0	4.1	941.0
1939/40	96.6	0.20	4506	25.6	66.8	5.4	1406.1
1940/41	88.1	0.26	4559	28.5	58.1	6.1	1909.8
1941/42	93.3	0.28	3990	27.8	71.6	5.2	691.8
1942/43	89.2	0.33	3614	33.5	70.3	6.1	1324.7
1943/44	88.2	0.46	4482	33.7	64.2	3.7	988.7
1944/45	75.7	0.54	3867	28.8	70.1	5.7	898.7
1945/46	78.3	0.58	4220	33.3	67.2	4.7	1131.3
1946/47	95.4	0.75	3853	36.7	90.2	3.6	767.3

(Continued to the next page)

Table A.7 (Continued from the previous page)
(p.89 of the book)

	Output (1000 metric tonnes)						
	Rape and mustard (10)	Ground- nut (11)	Sugar- cane (12)	Tea (13)	Tabacco (14)	Cotton (15)	Jute (16)
1947/48	78.0	1.0	3272	13.0	45.0	2.0	1222.0
1948/49	83.0	1.0	3411	15.0	46.0	3.0	978.0
1949/50	85.0	2.0	3100	17.0	42.0	3.0	595.0
1950/51	89.0	2.0	3336	17.0	43.0	3.0	1072.0
1951/52	100.0	2.0	3427	21.0	45.0	3.0	1131.0
1952/53	103.0	2.0	3675	23.0	49.0	3.0	1218.0
1953/54	100.0	2.0	3966	23.0	49.0	3.0	645.0
1954/55	105.0	3.0	3695	24.0	52.0	3.0	832.0
1955/56	104.0	6.0	3975	23.0	40.0	3.0	1161.0
1956/57	93.0	9.0	3911	24.0	40.0	2.0	985.0
1957/58	67.0	8.0	3765	20.0	35.0	2.0	1107.0
1958/59	105.0	16.0	3834	24.0	42.0	3.0	1071.0
1959/60	83.0	15.0	3611	25.0	27.0	3.0	992.0
1960/61	97.0	16.0	3955	19.0	26.0	3.0	1004.0
1961/62	103.0	13.0	4418	26.0	31.0	3.0	1244.0
1962/63	104.0	13.0	4749	23.0	29.0	3.0	1125.0
1963/64	89.0	12.0	5363	25.0	28.0	3.0	1049.0
1964/65	90.0	12.0	6231	28.0	27.0	3.0	951.0
1965/66	95.0	14.0	7550	27.0	27.0	3.0	1195.0
1966/67	102.0	24.0	8070	28.0	37.0	3.0	1142.0
1967/68	120.0	41.0	7589	29.0	39.0	3.0	1243.0
1968/69	128.0	52.0	7297	28.0	40.0	2.0	1050.0
1969/70	126.0	52.0	7418	30.0	41.0	2.0	1281.0
1970/71	136.0	46.0	7598	31.0	39.0	2.0	1251.0
1971/72	112.0	35.8	5686	11.8	34.0	1.7	760.8
1972/73	108.0	30.9	5319	23.7	40.0	1.4	1181.9
1973/74	97.5	27.3	6342	26.8	41.0	1.1	1088.6
1974/75	114.4	25.9	6635	31.5	40.0	1.1	630.7
1975/76	110.0	31.1	5886	28.9	45.0	0.8	714.5
1976/77	112.4	23.0	6401	33.0	63.0	0.7	872.0
1977/78	132.0	27.2	6670	36.4	49.0	0.9	972.3
1978/79	135.0	27.6	6826	37.7	43.0	1.2	1168.8
1979/80	116.0	26.0	6340	36.6	40.0	1.1	1081.7
1980/81	122.0	25.0	6600	39.7	47.0	1.7	896.8
1981/82	123.0	24.0	7136	38.8	51.0	3.5	843.0
1982/83	122.0	23.0	7257	40.4	50.0	3.6	885.6
1983/84	169.3	33.0	6960	42.2	48.0	2.9	946.4
1984/85	190.0	32.0	6878	37.9	49.0	1.8	927.1
1985/86	174.0	34.0	6640	43.3	46.0	1.5	1571.2
1986/87	152.7	34.0	6989	37.6	40.0	1.4	1225.2
1987/88	222.0	48.0	7207	40.6	42.0	2.3	852.8
1988/89	207.0	45.0	6707	44.0	39.0	2.6	807.0
1989/90	217.0	41.0	7423	39.0	38.0	4.8	841.7
1990/91	228.0	41.0	7682	46.0	34.0	5.5	962.0
1991/92	243.0	42.0	7446	45.0	34.0	4.9	956.7
1992/93	244.0	39.0	7507	50.8	36.0	5.6	807.9
1993/94	239.1	41.0	7111	50.5	38.0	5.1	805.9
1994/95	245.0	40.0	7446	52.0	38.2	5.8	960.8
1995/96	246.0	40.0	7165	48.0	39.0	5.9	733.9
1996/97	249.0	40.0	7520	53.0	38.0	6.0	882.9
1997/98	253.6	39.5	7379	50.5	36.7	6.1	1056.7
1998/99	252.5	38.8	6951	56.2	28.8	3.9	812.0
1999/2000	249.0	42.0	6910	46.0	35.0	4.0	711.4
2000/01	238.0	41.0	6742	52.0	37.0	2.5	821.2
2001/02	233.0	42.0	6502	52.0	38.0	5.3	858.7

Table A.8 Implicit prices to aggregate outputs of principal crops (p.92 of the book)

1. India	Levels (Rs/kg)			Relative price (wheat=1)		
	1938/39	1960/61	1980/81	1938/39	1960/61	1980/81
Rice	0.098	0.564	1.803	1.300	1.393	1.256
Wheat	0.075	0.405	1.435	1.000	1.000	1.000
Jowar	0.068	0.339	1.481	0.910	0.836	1.032
Bajra	0.073	0.414	1.328	0.977	1.021	0.925
Barley	0.062	0.308	1.215	0.832	0.760	0.846
Maize	0.061	0.338	1.288	0.812	0.834	0.897
Ragi	0.060	0.398	1.314	0.803	0.984	0.915
Gram	0.086	0.358	3.085	1.150	0.883	2.149
Linseed	0.117	0.678	4.294	1.561	1.673	2.992
Sesamum	0.128	1.082	5.120	1.710	2.670	3.566
Rape and mustard	0.128	0.747	4.416	1.708	1.845	3.077
Groundnut	0.058	0.656	3.372	0.770	1.619	2.349
Sugarcane	0.015	0.041	0.249	0.198	0.102	0.174
Tea	1.432	2.699	7.248	19.085	6.664	5.049
Coffee	0.804	2.543	10.914	10.715	6.277	7.603
Tabacco	0.340	2.594	8.500	4.533	6.405	5.921
Cotton (lint)	0.386	2.940	14.098	5.148	7.258	9.821
Jute	0.152	1.069	1.653	2.029	2.639	1.152
2. Pakistan	Levels (Rs/kg)			Relative price (wheat=1)		
	1938/39	1959/60	1980/81	1938/39	1959/60	1980/81
Rice	0.098	0.537	2.416	1.300	1.324	1.906
Wheat	0.075	0.405	1.267	1.000	1.000	1.000
Jowar	0.068	0.338	1.556	0.910	0.835	1.228
Bajra	0.073	0.361	2.146	0.751	0.890	1.694
Barley	0.062	0.297	1.402	0.832	0.731	1.106
Maize	0.061	0.356	1.624	0.812	0.878	1.281
Gram	0.086	0.387	4.380	1.150	0.954	3.457
Sesamum	0.128	0.800	4.809	1.710	1.973	3.795
Rape and mustard	0.128	0.613	2.839	1.708	1.512	2.241
Sugarcane	0.015	0.050	0.241	0.198	0.123	0.190
Tobacco	0.340	2.499	9.330	4.533	6.165	7.363
Cotton (lint)	0.386	2.658	12.809	5.148	6.557	10.109
3. Bangladesh	Levels (Rs or Taka/kg)			Relative price (rice=1)		
	1938/39	1959/60	1980/81	1938/39	1959/60	1980/81
Rice	0.098	0.537	2.899	1.000	1.000	1.000
Wheat	0.075	0.405	2.848	0.769	0.755	0.982
Barley	0.062	0.338	2.617	0.640	0.631	0.903
Maize	0.061	0.356	2.617	0.625	0.663	0.903
Gram	0.086	0.387	5.529	0.885	0.720	1.907
Linseed	0.117	0.868	5.900	1.201	1.618	2.035
Sesamum	0.128	0.800	6.838	1.315	1.490	2.359
Rape and mustard	0.128	0.613	7.676	1.314	1.142	2.648
Groundnut	0.058	0.776	6.668	0.592	1.446	2.300
Sugarcane	0.015	0.050	0.394	0.152	0.093	0.136
Tea	1.432	5.589	17.833	14.683	10.417	6.151
Tabacco	0.340	2.499	9.562	3.487	4.657	3.298
Cotton (lint)	0.386	2.658	17.370	3.960	4.954	5.992
Jute	0.152	0.710	3.146	1.561	1.323	1.085

Sources: Figures for 1938/39 are estimated from data in Sivasubramonian (1960) and are similar to those used by Sivasubramonian (2000). Other figures for India, Pakistan, Bangladesh 1959/60 are estimated indirectly from official statistics of the national income statistics of India and Pakistan (India B, various issues; Pakistan B, various issues). For Bangladesh 1980/81, producers' prices reported in Bangladesh (1993) are used (for rice, "aman traditional variety").

Table A.11 Total crop output, land, and labor force in areas in contemporary Bangladesh, 1901/02–2001/02
(p.98 of the book)

	Total output value, major crops (million Rs. or Taka)			Intermed. parameters		Value added from all crops (million Rs. or Taka)			Total area (1000ha)		Population (million)	
	Q at P(1938/39)	Q at P(1959/60)	Q at P(1980/81)	S1 (crop coverage rate)	S2 (value- added rate)	Y at P(1938/39)	Y at P(1959/60)	Y at P(1980/81)	Total area cultivated (A)	Sum of areas, major crops (A')	Agric. labor force (L)	Total population (L')
	(1)	(2)	(3)	(4)	(5)	(6)	(7)	(8)	(9)	(10)	(11)	(12)
1901/02	1103	5870	31742	0.7778	0.9528	1351	7191	38884	8902	9283	9.72	28.13
1902/03	1340	7192	38951	0.8101	0.9627	1593	8547	46290	8903	9514	9.83	28.45
1903/04	1252	6693	36240	0.7978	0.9592	1505	8047	43572	8614	9286	9.94	28.76
1904/05	1412	7566	40911	0.7910	0.9555	1706	9139	49416	8947	10291	10.06	29.08
1905/06	1235	6594	35429	0.7745	0.9546	1523	8127	43668	9013	9830	10.18	29.40
1906/07	1174	6236	33480	0.7827	0.9556	1434	7613	40875	8811	10072	10.30	29.73
1907/08	1091	5748	30663	0.7423	0.9470	1391	7333	39120	8846	10282	10.42	30.05
1908/09	945	5050	26986	0.7466	0.9471	1198	6407	34236	8363	9481	10.54	30.39
1909/10	1491	8029	43427	0.8096	0.9631	1774	9552	51664	8758	10565	10.66	30.72
1910/11	1510	8106	43863	0.8155	0.9601	1777	9542	51637	8717	10548	10.78	31.06
1911/12	1455	7796	42133	0.8185	0.9554	1699	9101	49181	8460	10476	10.87	31.34
1912/13	1207	6402	34415	0.7976	0.9539	1444	7657	41163	8844	10201	10.95	31.63
1913/14	1239	6570	35600	0.7838	0.9497	1501	7960	43133	8717	9974	11.04	31.91
1914/15	1069	5637	30046	0.7881	0.9508	1290	6801	36249	8849	10175	11.13	32.20
1915/16	1299	6948	37512	0.8018	0.9556	1548	8280	44704	9212	10044	11.22	32.49
1916/17	1338	7141	38605	0.8088	0.9575	1584	8455	45705	8974	10234	11.30	32.79
1917/18	1387	7383	39913	0.8087	0.9546	1637	8714	47109	8970	10052	11.39	33.08
1918/19	979	5196	27855	0.7647	0.9405	1204	6391	34259	8902	9829	11.48	33.38
1919/20	1258	6678	35996	0.8163	0.9586	1477	7843	42273	9004	10037	11.57	33.68
1920/21	1049	5593	30332	0.7786	0.9412	1268	6761	36667	8902	9814	11.66	33.99
1921/22	1165	6275	34316	0.8028	0.9505	1380	7429	40628	8889	9821	11.66	34.32
1922/23	1241	6671	36189	0.8093	0.9514	1459	7843	42542	8681	9919	11.66	34.65
1923/24	1068	5645	30282	0.7969	0.9462	1267	6703	35954	8723	9546	11.65	34.98
1924/25	1141	6065	32614	0.7974	0.9478	1357	7210	38769	8770	9828	11.64	35.32
1925/26	1119	5910	31683	0.7972	0.9476	1331	7025	37658	8867	9936	11.64	35.66
1926/27	1125	5875	31237	0.7961	0.9460	1337	6981	37117	8579	9755	11.63	36.00
1927/28	1021	5355	28462	0.7979	0.9451	1210	6342	33711	8544	9254	11.62	36.35
1928/29	1279	6772	36283	0.8072	0.9473	1501	7948	42584	8516	10006	11.61	36.70
1929/30	1225	6457	34526	0.7997	0.9501	1455	7672	41021	8793	9735	11.60	37.05
1930/31	1275	6718	35891	0.7979	0.9496	1517	7995	42714	8760	9839	11.58	37.41
1931/32	1183	6311	34250	0.7961	0.9460	1406	7500	40702	8708	9805	11.58	37.84
1932/33	1138	6006	32518	0.7991	0.9472	1349	7119	38546	8699	9602	11.58	38.28
1933/34	1135	5933	32264	0.7963	0.9436	1345	7030	38232	8651	9749	11.57	38.72
1934/35	1148	5985	32555	0.7899	0.9441	1372	7153	38911	8600	9667	11.57	39.17
1935/36	962	4977	27148	0.7882	0.9440	1152	5961	32516	8406	9410	11.56	39.62
1936/37	1245	6498	35233	0.8173	0.9509	1449	7561	40995	8263	9491	11.56	40.08
1937/38	1146	6001	32414	0.8195	0.9487	1327	6947	37526	8299	9418	11.55	40.54
1938/39	985	5152	27924	0.7881	0.9412	1177	6153	33349	8420	9496	11.54	41.01
1939/40	1116	5792	31107	0.8019	0.9479	1319	6847	36773	8756	9792	11.53	41.49
1940/41	1009	5128	27124	0.7926	0.9498	1209	6144	32502	8745	10262	11.52	41.97
1941/42	1069	5640	30687	0.7952	0.9469	1273	6716	36541	8799	9462	11.53	42.02
1942/43	963	4976	26551	0.7987	0.9473	1142	5901	31488	8756	9897	11.55	42.07
1943/44	1299	6837	36926	0.8139	0.9517	1520	7995	43182	9047	10569	11.56	42.12
1944/45	1096	5767	31177	0.7949	0.9444	1302	6852	37041	9185	10524	11.58	42.17
1945/46	1097	5721	30658	0.7802	0.9406	1323	6896	36958	9234	10077	11.59	42.22
1946/47	1037	5451	29286	0.7811	0.9411	1249	6568	35286	9155	9661	11.60	42.28

(Continued to the next page)

Table A.11 (Continued from the previous page)
(p.99 of the book)

	Total output value, major crops			Intermed. parameters		Value added from all crops			Total area		Population	
	(1)	(2)	(3)	(4)	(5)	(6)	(7)	(8)	(9)	(10)	(11)	(12)
1947/48	948	4951	26609	0.7938	0.9450	1129	5894	31680	8915	9130	11.62	42.33
1948/49	1008	5302	28675	0.7938	0.9450	1200	6312	34139	9041	9242	11.63	42.38
1949/50	919	4860	26522	0.7816	0.9523	1119	5922	32315	9036	9170	11.65	42.43
1950/51	992	5196	28039	0.8014	0.9447	1169	6125	33053	8998	9425	11.66	42.48
1951/52	981	5116	27591	0.7879	0.9383	1168	6092	32857	9003	9580	11.80	43.56
1952/53	1032	5378	28960	0.7888	0.9352	1224	6376	34335	9028	9840	11.94	44.65
1953/54	1038	5472	29892	0.8092	0.9547	1224	6456	35267	9038	9965	12.08	45.78
1954/55	1002	5261	28622	0.7952	0.9398	1185	6218	33829	8953	9822	12.22	46.94
1955/56	932	4821	26047	0.8001	0.9087	1059	5475	29585	8763	9214	12.36	48.12
1956/57	1078	5647	30525	0.8244	0.9395	1228	6436	34788	8758	9243	12.50	49.34
1957/58	1025	5349	28740	0.8151	0.9312	1170	6111	32835	8762	9367	12.65	50.58
1958/59	970	5053	27327	0.8318	0.9194	1073	5585	30205	8763	9210	12.79	51.86
1959/60	1100	5772	31154	0.8523	0.9488	1224	6426	34682	8765	9798	12.93	53.17
1960/61	1202	6332	34379	0.8548	0.9285	1306	6878	37344	8770	10143	13.08	54.51
1961/62	1253	6554	35401	0.8585	0.9366	1367	7150	38618	8880	10013	13.25	55.99
1962/63	1164	6073	32967	0.8358	0.9165	1276	6659	36148	8877	10096	13.42	57.51
1963/64	1329	6965	37802	0.8616	0.9211	1420	7445	40412	8879	10350	13.59	59.07
1964/65	1319	6888	37538	0.8667	0.9212	1402	7321	39899	8920	10535	13.76	60.68
1965/66	1376	7129	38904	0.8648	0.9016	1434	7433	40560	9037	10911	13.93	62.33
1966/67	1295	6686	36656	0.8446	0.8796	1349	6963	38176	9077	10654	14.10	64.02
1967/68	1462	7607	41607	0.8549	0.8984	1536	7995	43728	9093	11626	14.28	65.76
1968/69	1449	7577	41660	0.8453	0.9047	1551	8110	44588	9071	11448	14.45	67.55
1969/70	1553	8115	44401	0.8514	0.9034	1648	8610	47110	9103	12113	14.63	69.39
1970/71	1471	7650	41942	0.8561	0.9026	1550	8066	44221	9097	11633	14.80	71.28
1971/72	1219	6425	35572	0.8609	0.9045	1280	6750	37373	9094	10700	14.93	72.95
1972/73	1304	6828	37125	0.8545	0.9011	1375	7200	39148	9113	11254	15.05	74.66
1973/74	1487	7805	42504	0.8499	0.8968	1569	8236	44853	9116	11643	15.18	76.42
1974/75	1371	7205	39639	0.8449	0.8915	1447	7603	41828	9133	11104	15.30	78.22
1975/76	1519	8046	44101	0.8388	0.8960	1623	8595	47112	9129	11592	15.42	80.05
1976/77	1469	7729	42246	0.8331	0.8970	1582	8323	45488	9124	11309	15.54	81.93
1977/78	1615	8493	46521	0.8325	0.8976	1741	9157	50156	9118	11583	15.66	83.86
1978/79	1646	8627	47234	0.8370	0.9007	1771	9284	50829	9130	11839	15.77	85.83
1979/80	1635	8592	47187	0.8410	0.9060	1761	9256	50832	9137	11948	15.88	87.85
1980/81	1770	9344	51547	0.8437	0.9024	1893	9994	55133	9130	12159	15.99	89.91
1981/82	1737	9160	50591	0.8379	0.8953	1856	9788	54056	9130	12194	16.30	91.86
1982/83	1806	9523	52609	0.8367	0.8918	1925	10150	56075	9092	12313	16.63	93.86
1983/84	1860	9818	54478	0.8329	0.8858	1978	10441	57934	9111	12477	16.96	95.90
1984/85	1889	9991	55673	0.8297	0.8785	2000	10578	58949	9135	12273	17.29	97.98
1985/86	1999	10509	57614	0.8307	0.8746	2104	11064	60659	9169	12698	17.63	100.11
1986/87	1976	10427	57467	0.8397	0.8775	2065	10896	60056	9247	12624	17.98	102.28
1987/88	1934	10231	56947	0.8399	0.8774	2020	10689	59495	8875	12218	18.34	104.50
1988/89	1931	10230	56765	0.8399	0.8804	2024	10723	59501	8725	12131	18.70	106.77
1989/90	2143	11376	63042	0.8459	0.8878	2249	11939	66162	8721	12362	19.07	109.09
1990/91	2192	11603	64285	0.8399	0.8842	2307	12215	67677	8533	12436	19.44	111.46
1991/92	2238	11864	65778	0.8374	0.8805	2353	12474	69159	8335	12220	19.66	113.23
1992/93	2242	11893	66030	0.8381	0.8816	2359	12510	69456	8199	12112	19.88	115.03
1993/94	2205	11703	64940	0.8383	0.8771	2307	12244	67945	8063	11968	20.09	116.86
1994/95	2127	11239	62442	0.8306	0.8712	2231	11789	65496	8084	11927	20.30	118.72
1995/96	2175	11553	64389	0.8322	0.8721	2280	12107	67477	8147	11907	20.52	120.61
1996/97	2334	12382	68829	0.8287	0.8646	2435	12918	71806	8199	12201	20.72	122.53
1997/98	2381	12624	70299	0.8280	0.8561	2461	13053	72683	8324	12449	20.93	124.48
1998/99	2452	13042	72703	0.8218	0.8462	2525	13429	74860	8345	12277	21.14	126.46
1999/2000	2727	14602	81214	0.8183	0.8468	2822	15110	84040	8492	12716	21.34	128.48
2000/01	2935	15724	86949	0.8172	0.8489	3049	16333	90321	8439	12768	21.54	130.52
2001/02	2857	15305	84583	0.8166	0.8481	2968	15894	87841	8439	12585	21.88	132.60

Table A.12 GDP and agricultural value added in India, Pakistan, and Bangladesh, 1901/02–2001/02 (p.108 of the book)

	Population		GDP at nominal prices		GDP at constant prices#							
	Total in million	Annual growth rate (%)	GDP in million Rs.	Agricultural value added in million Rs.	Share of agriculture (%)	GDP index*	Annual growth rate (%)	Agricultural value added index*	Annual growth rate (%)	GDP per capita index*	Annual growth rate (%)	
Pre-Partition												
Undivided India												
1900/01	277.1		13,319	8,311	65.3	66.03		82.56		99.74		
1910/11	298.8	0.75	18,956	11,986	63.1	81.51	2.11	98.62	1.78	114.19	1.35	
1920/21	305.7	0.23	35,102	18,181	58.6	75.17	-0.81	84.33	-1.57	102.94	-1.04	
1930/31	338.2	1.01	27,562	13,120	55.3	94.55	2.29	100.14	1.72	117.04	1.28	
1940/41	389.1	1.40	30,560	13,665	52.0	102.82	0.84	102.36	0.22	110.62	-0.56	
1946/47	418.6	1.22	71,148	37,117	52.2	100.00	-0.46	100.00	-0.39	100.00	-1.68	
Areas currently in India												
1900/01	232.7		10,866	6,651	64.1	65.54		83.80		96.77		
1910/11	248.4	0.65	15,196	9,340	61.4	79.63	1.95	97.45	1.51	110.15	1.30	
1920/21	250.6	0.09	28,783	14,597	57.5	74.81	-0.62	85.81	-1.27	102.57	-0.71	
1930/31	277.2	1.01	22,616	10,401	53.7	94.09	2.29	100.75	1.61	116.61	1.28	
1940/41	318.9	1.40	25,471	11,073	50.7	104.08	1.01	105.31	0.44	112.15	-0.39	
1946/47	343.6	1.24	58,403	29,284	50.1	100.00	-0.67	100.00	-0.86	100.00	-1.91	
Areas currently in Pakistan												
1900/01	16.6		697	427	64.4	39.79		41.79		78.68		
1910/11	19.4	1.56	1,189	783	66.0	58.85	3.91	63.32	4.15	99.52	2.35	
1920/21	21.1	0.85	2,286	1,240	59.9	54.98	-0.68	53.70	-1.65	85.36	-1.53	
1930/31	23.5	1.09	2,001	1,098	59.5	74.83	3.08	72.64	3.02	104.17	1.99	
1940/41	28.3	1.83	2,319	1,214	58.9	90.13	1.86	86.61	1.76	104.45	0.03	
1946/47	32.8	2.46	6,174	3,770	61.3	100.00	1.73	100.00	2.40	100.00	-0.73	
Areas currently in Bangladesh												
1900/01	27.8		1,756	1,233	72.7	95.07		111.76		144.43		
1910/11	31.1	1.10	2,571	1,864	72.4	119.59	2.29	140.00	2.25	162.76	1.19	
1920/21	34.0	0.90	4,033	2,344	65.1	97.34	-2.06	102.34	-3.13	121.08	-2.96	
1930/31	37.4	0.96	2,945	1,621	64.1	117.19	1.86	121.46	1.71	132.44	0.90	
1940/41	42.0	1.15	2,769	1,378	57.3	103.63	-1.23	95.91	-2.36	104.40	-2.38	
1946/47	42.3	0.12	6,571	4,062	61.9	100.00	-0.59	100.00	0.70	100.00	-0.72	

(Continued to the next page)

Figure A.1 Per-capita GDP (constant prices) in the long-run
(p.110 of the book)

